



# ArcGIS PRO

# DRH Beginner Tutorial

Introduction | Data Acquisition | Basic Functions

March 2023

# What is ArcGIS Pro

- ArcGIS is a **Geographic Information System (GIS)** for working with maps and geographic information, created by Esri.
- ArcGIS Pro is the latest professional desktop GIS application from Esri.
- It is the **new version of ArcMap**.
- With ArcGIS Pro, you can:
  - explore, visualize, and analyze data;
  - create 2D maps and 3D scenes; and
  - share your work to your ArcGIS Online or ArcGIS Enterprise portal.

# Data Acquisition

Useful links to find Geographic Data:

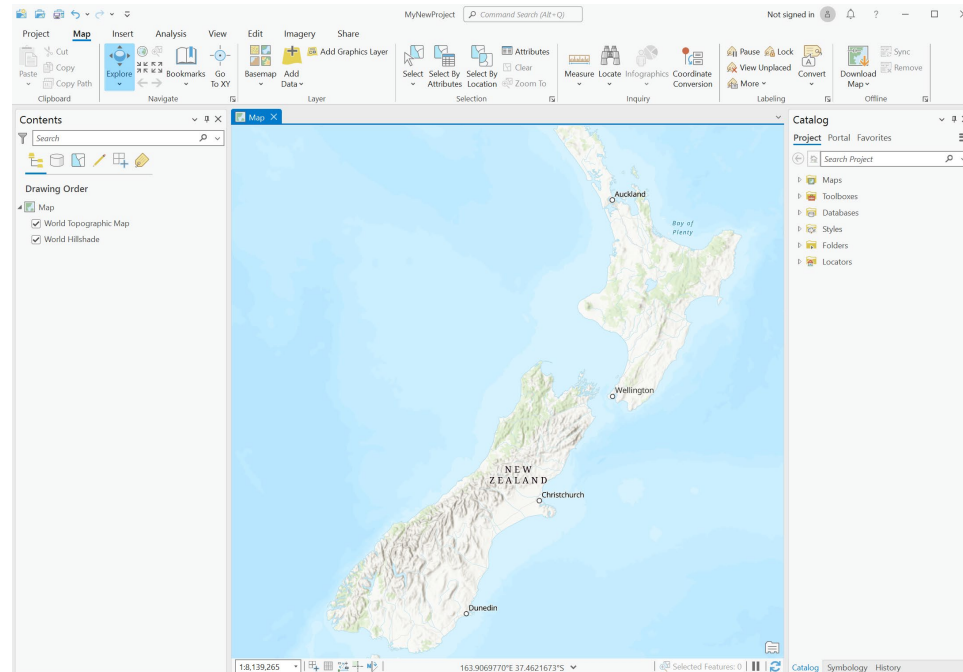
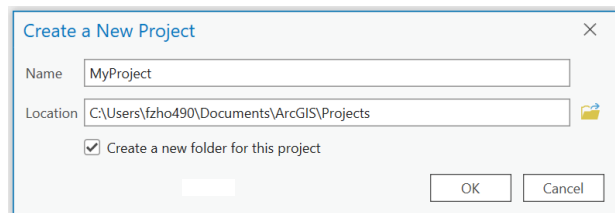
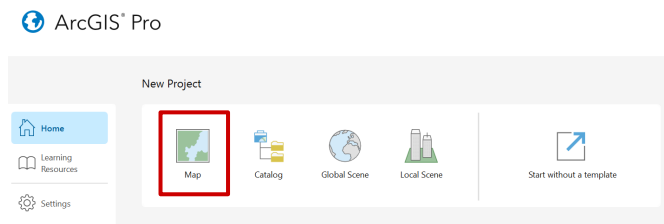
- Koordinates - <https://koordinates.com/>
- Auckland Council GeoMaps - <https://geomapspublic.aucklandcouncil.govt.nz/viewer/index.html>
- Land Information New Zealand - <https://data.linz.govt.nz/>
- Waka Kotahi open data - <https://opendata-nzta.opendata.arcgis.com/>
- Auckland Transport Open GIS Data - <https://data-atgis.opendata.arcgis.com/>
- Other Councils' Open Data Portals:

E.g. Hawke's Bay Regional Council - <https://hbrcopendata-hbrc.opendata.arcgis.com/>

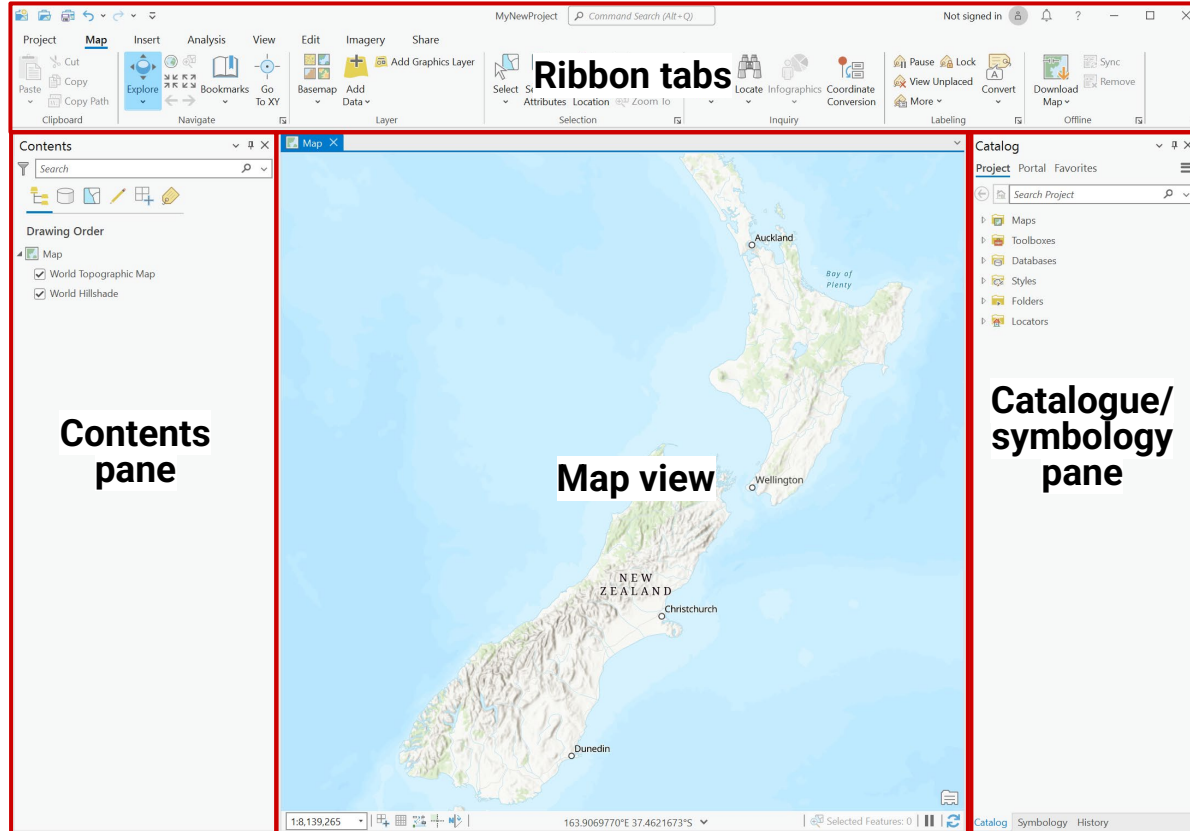
*DRH Tutorial - Data Acquisition Finding Spatial (Map) Info:*

<https://www.drh.nz/2022/12/09/data-acquisition-finding-spatial-map-info/>

# Launch ArcGIS Pro & Create a New Project

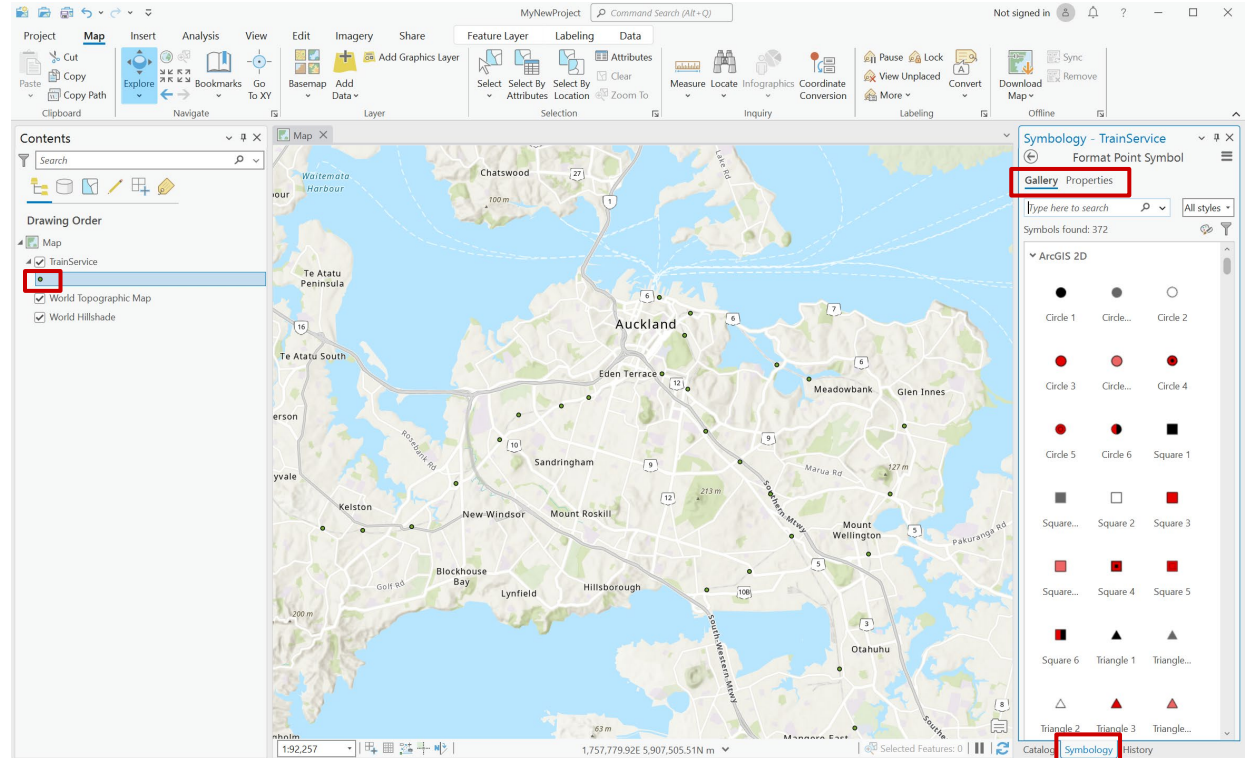


# ArcGIS ProUser Interface



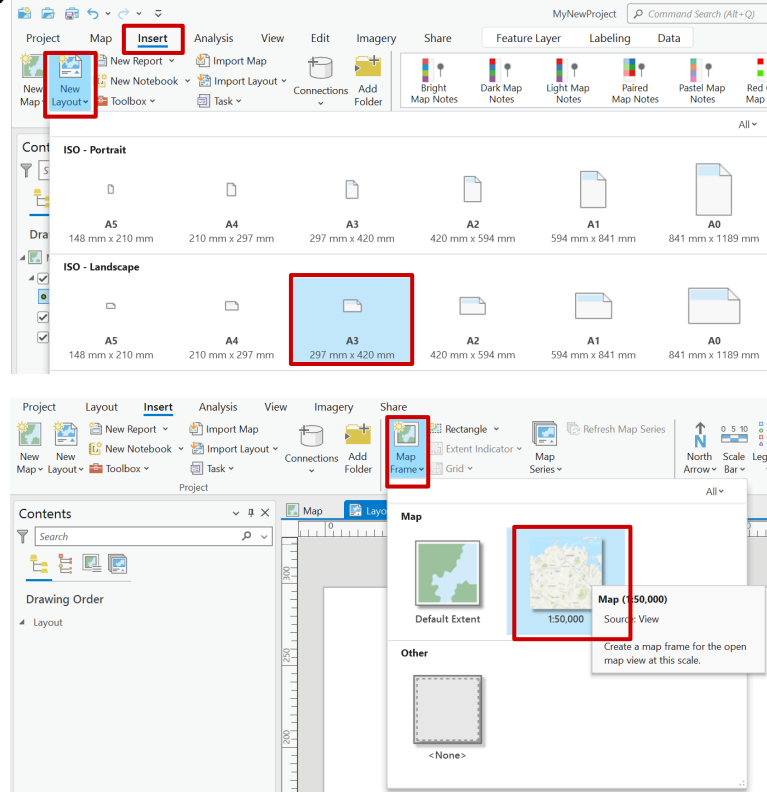
# Editing Symbolology

- Once you have imported your data, clicking on the icon underneath the name of the layer.
- This will bring up the **Symbology** tab on the right hand side.
- Gallery** – Search a Symbol
- Properties** - to edit the colours, line weights, and styles etc.
- Make sure to click '**Apply**' to see the changes.



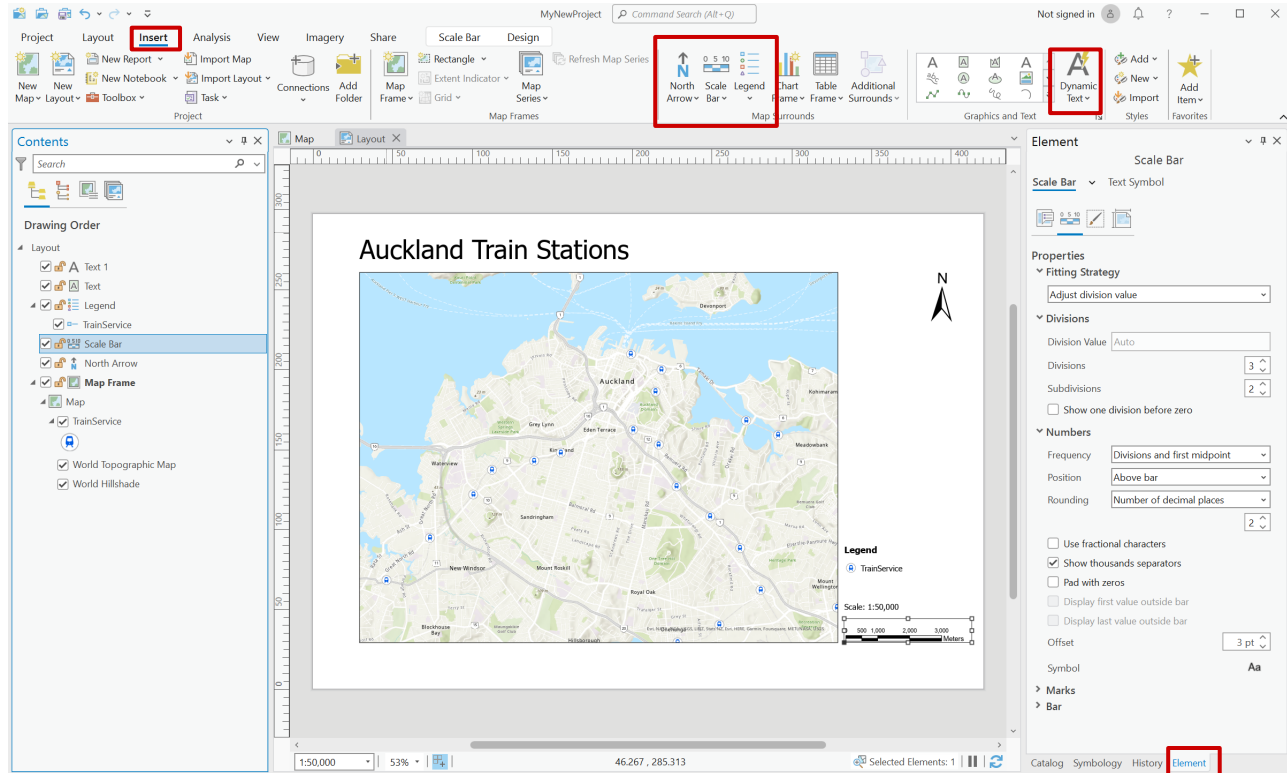
# Adding a new Layout

- Under the **Insert** tab, select **New Layout**. Choose your desired size and orientation (typically A4/A3).
- Once the page appears, navigate to **Insert > Map Frame**, and select the map you want to add to your page.
- Click and drag on the page to create a frame within which your map will appear.



# Adding Map Components

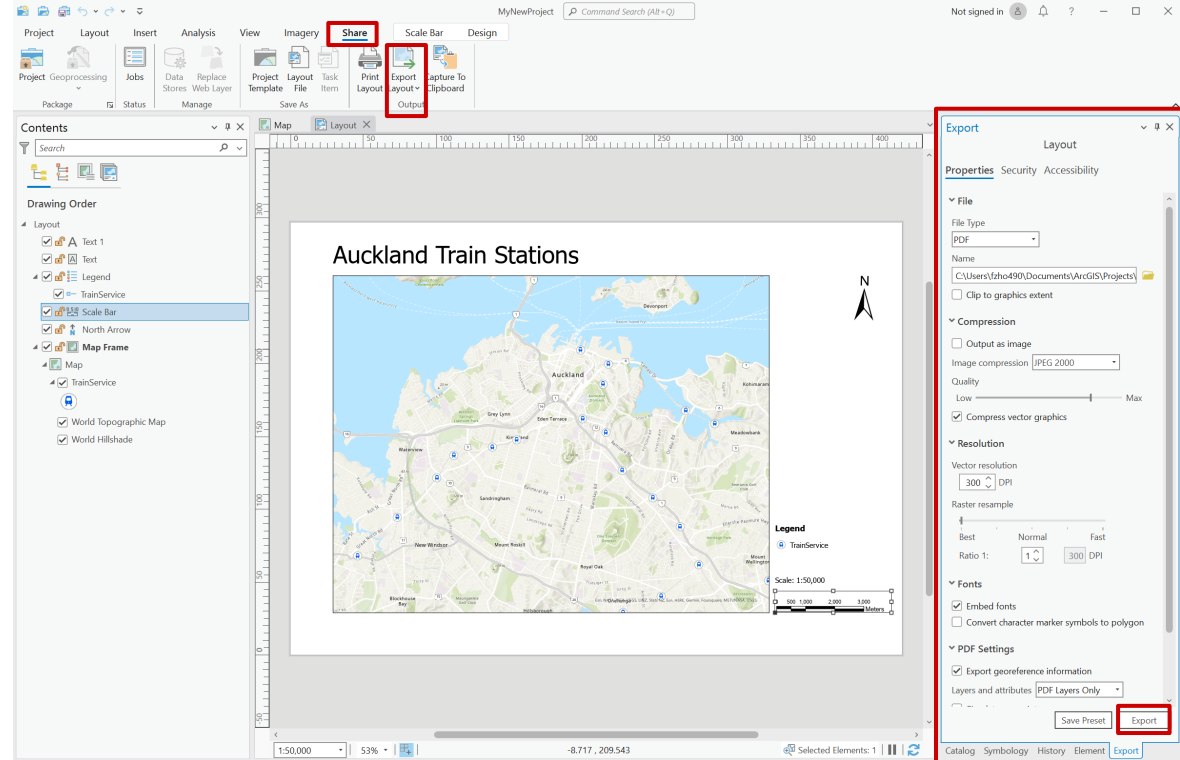
- Under the **Insert** tab, you can add a **North Arrow**, **Scale Bar**, and **Legend**.
- Add a **Map Title** by inserting **straight text**.
- Add a **Scale** by inserting **Dynamic Text**.
- Double click the elements on the map to edit their properties in the **Element** tab.





# Saving and Exporting

- Once your map is ready to export as a different file type (e.g. PDF), go to the **Share** tab.
- Select **Export Layout**.
- Click **Export** at the bottom right.
- All done!



#### Helpdesk

Architecture Building Level 4, Room 423 (421-423).

[drh022@aucklanduni.ac.nz](mailto:drh022@aucklanduni.ac.nz)

#### Opening Hours:

Mon-Fri: 9:30am-4:30pm

*We do not open during public holiday*

*Appointments only during school breaks*

---

For more about 



[drh.nz](https://drh.nz)



[drh](https://www.facebook.com/drh)



[drh.nz](https://www.instagram.com/drh)