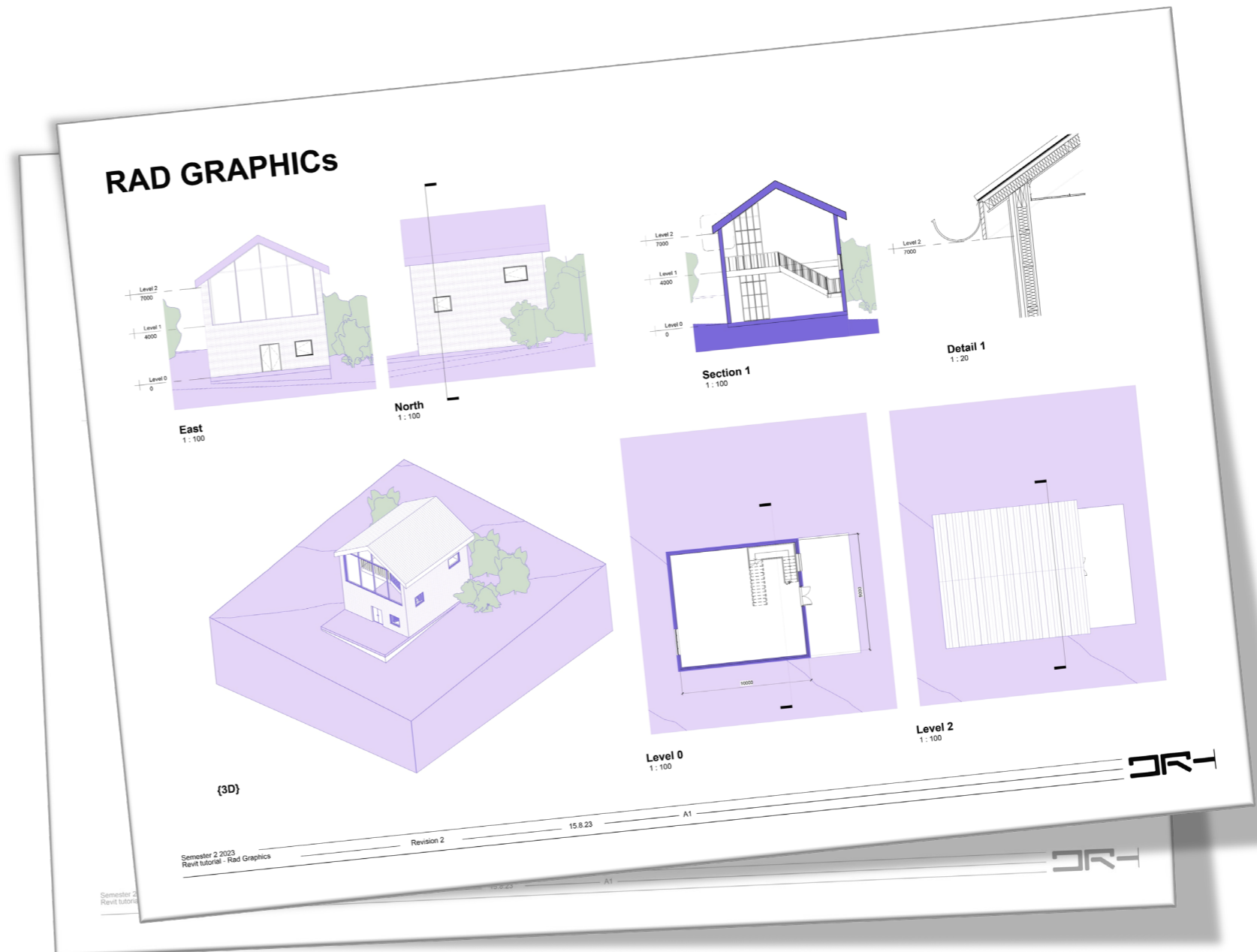




Graphics with Revit

'Present with style'

Tutorial 2023



Title block

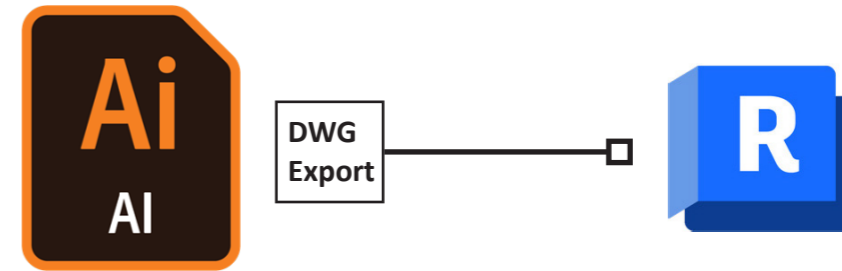
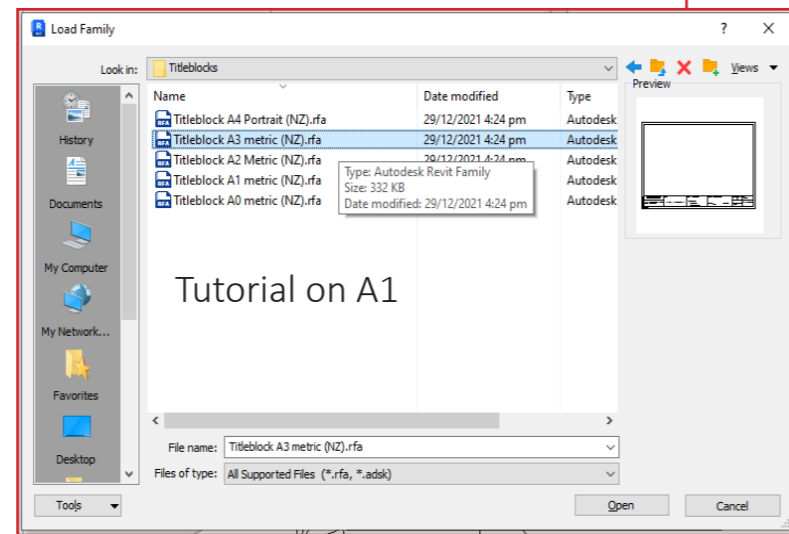
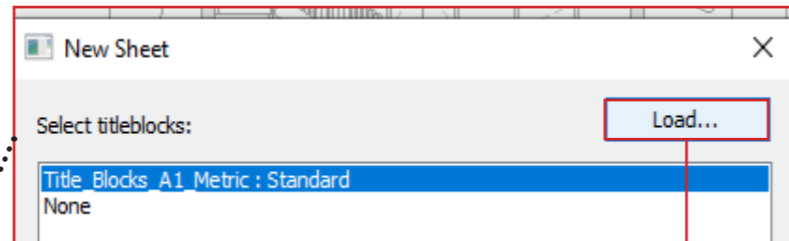
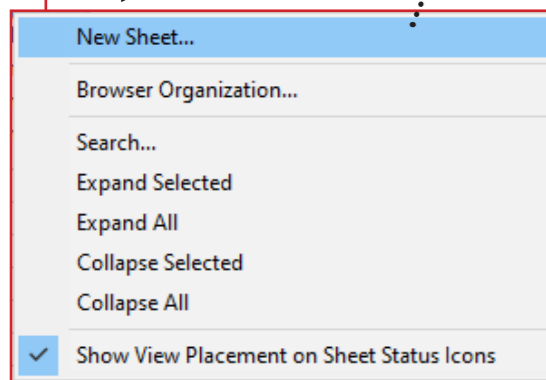
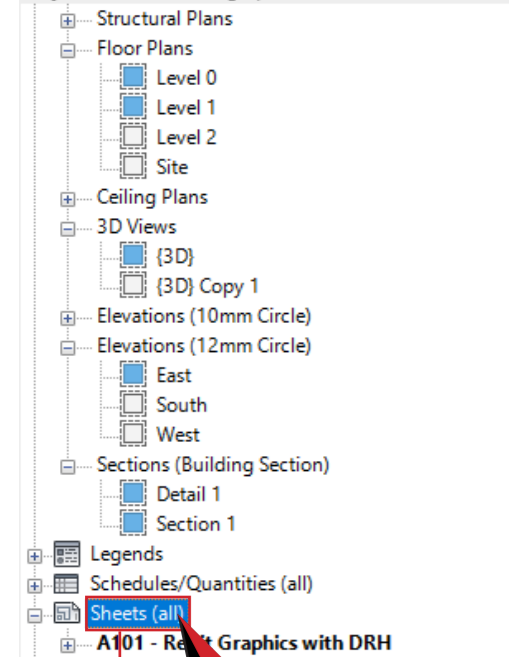
Customise

New Sheet > Load >

New Zealand > Title Blocks

*Helps set the correct page size for exporting

Project Browser - Revit graphics tutorial file 2023 (1).rvt

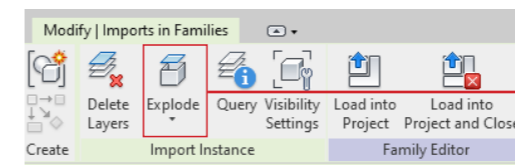
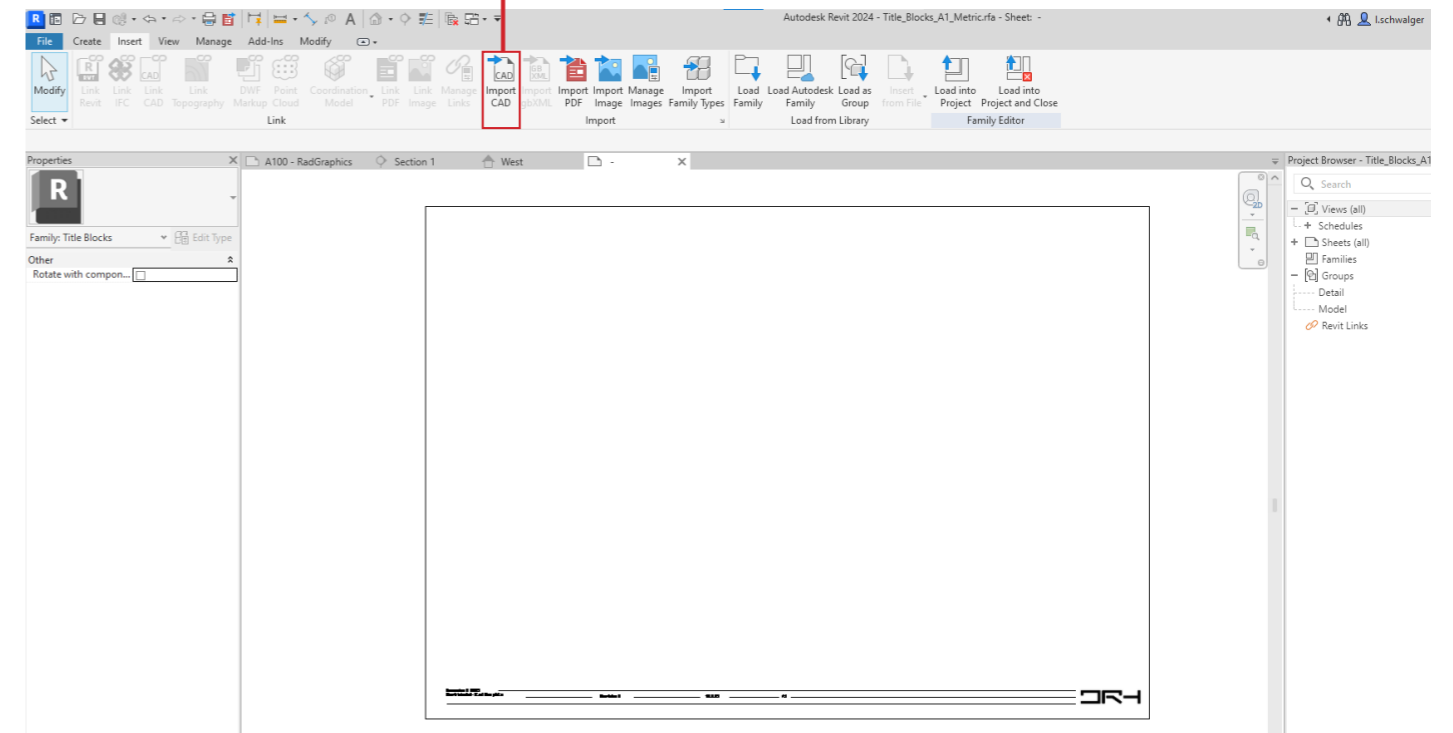


Project Browser

- Families
- + Analytical Links
- Annotation Symbols
 - + Anno_Callout_Head
 - + Anno_Centrelines
- + Title_Blocks_A1_Metric — Right Click > Edit



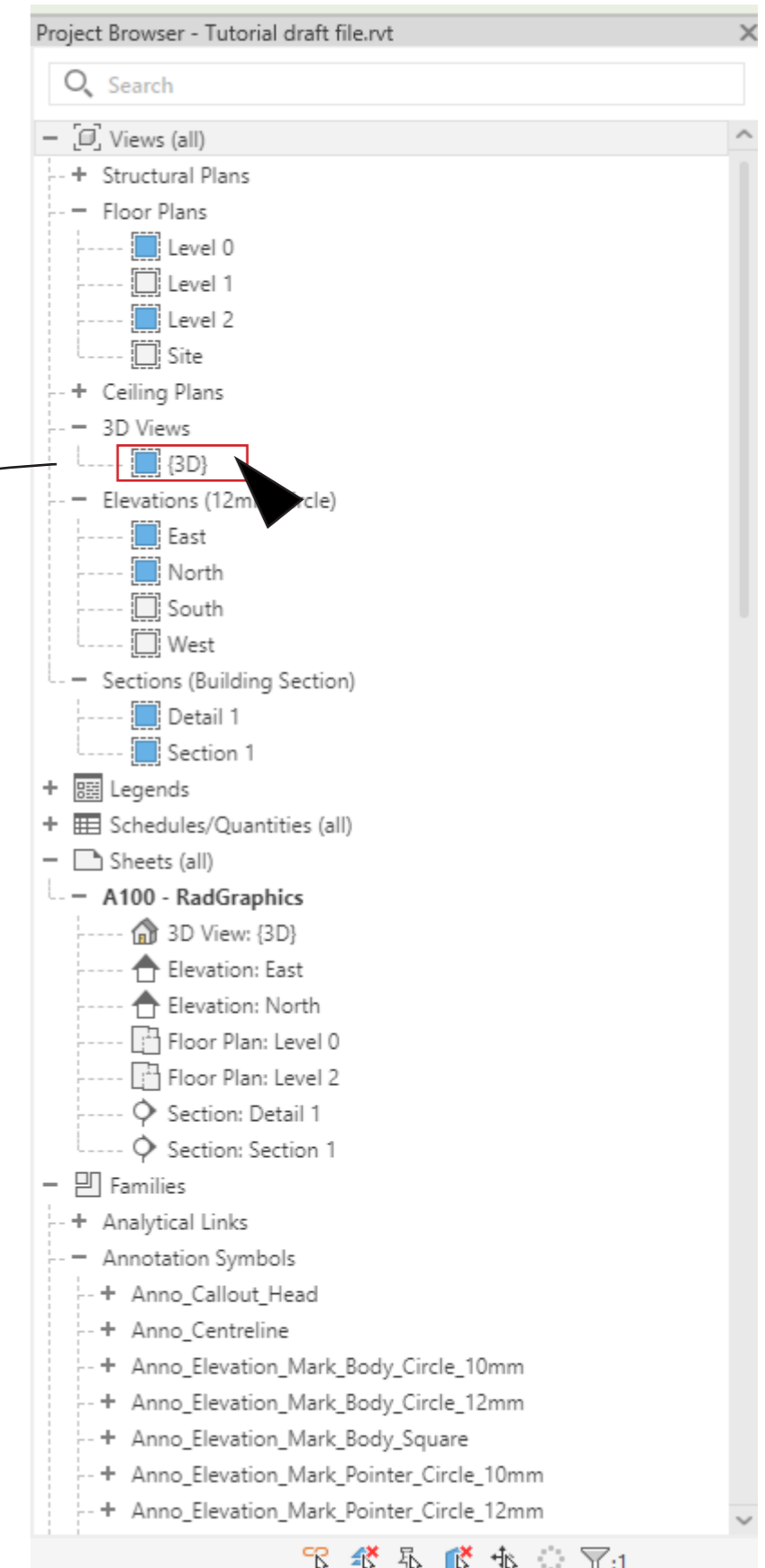
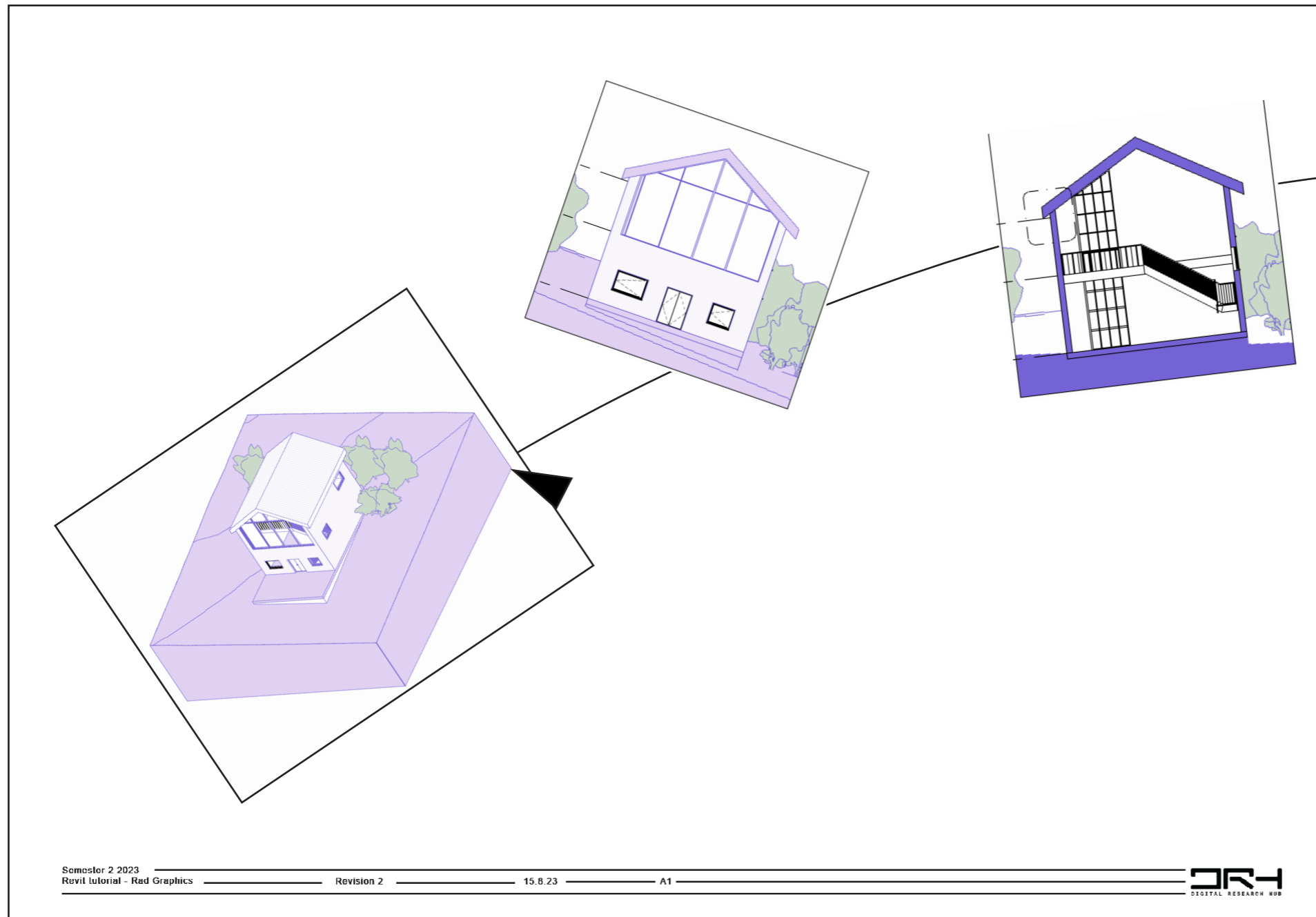
“Locate file and import the DWG export.”



*If you want to make further edits to the Titleblock just select the import and explode it into view

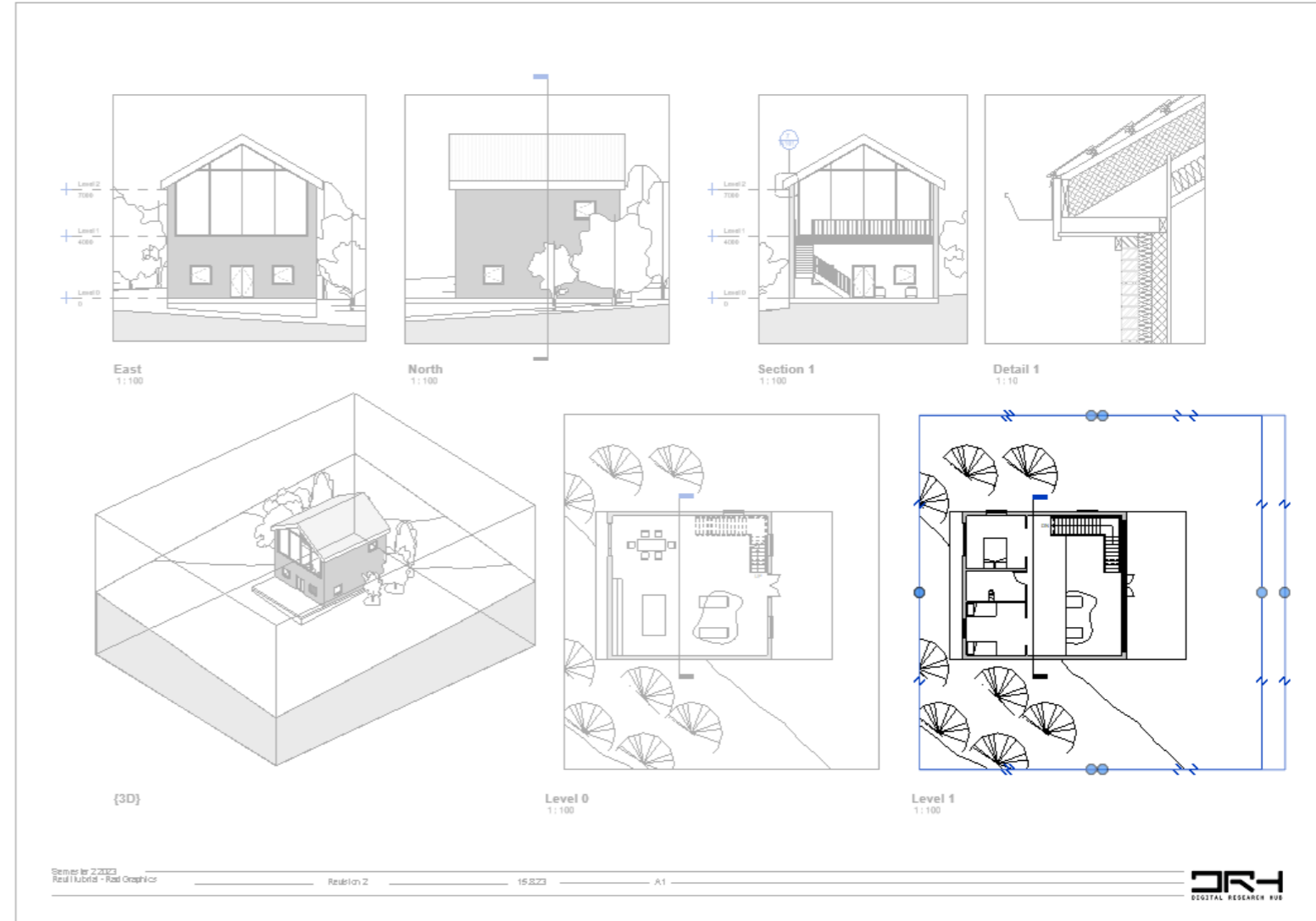
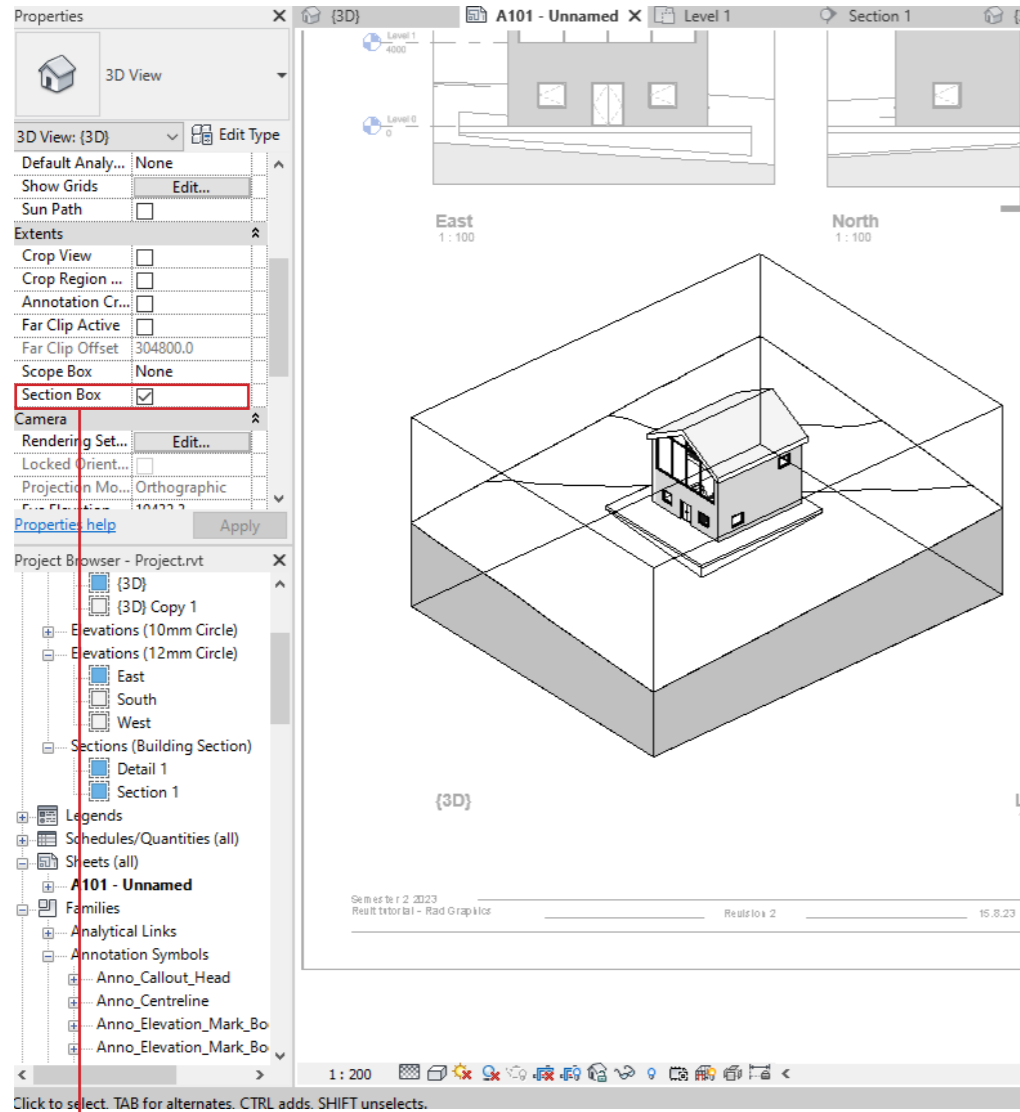
Drag and Drop

Setting up Sheet

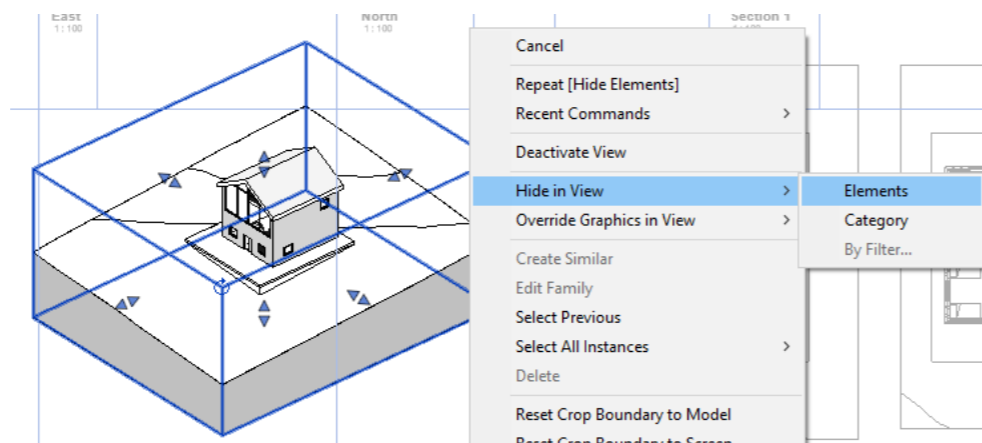


Arrange and Resize

Setting up Sheet



Tick section box to crop topography



*Hide annotation symbols that you want to customize on illustrator

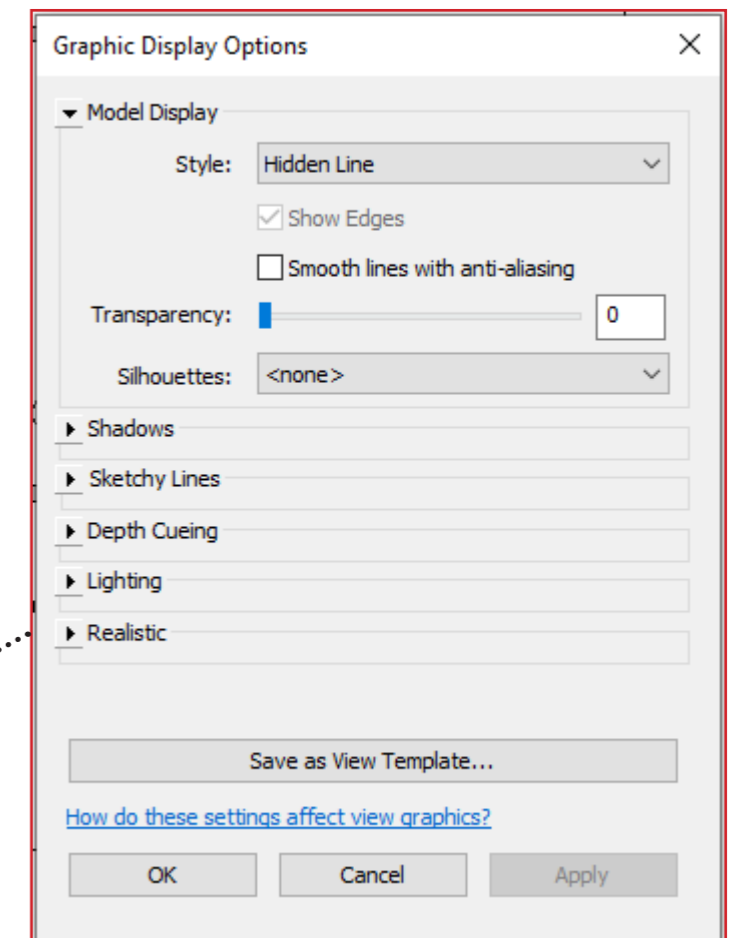
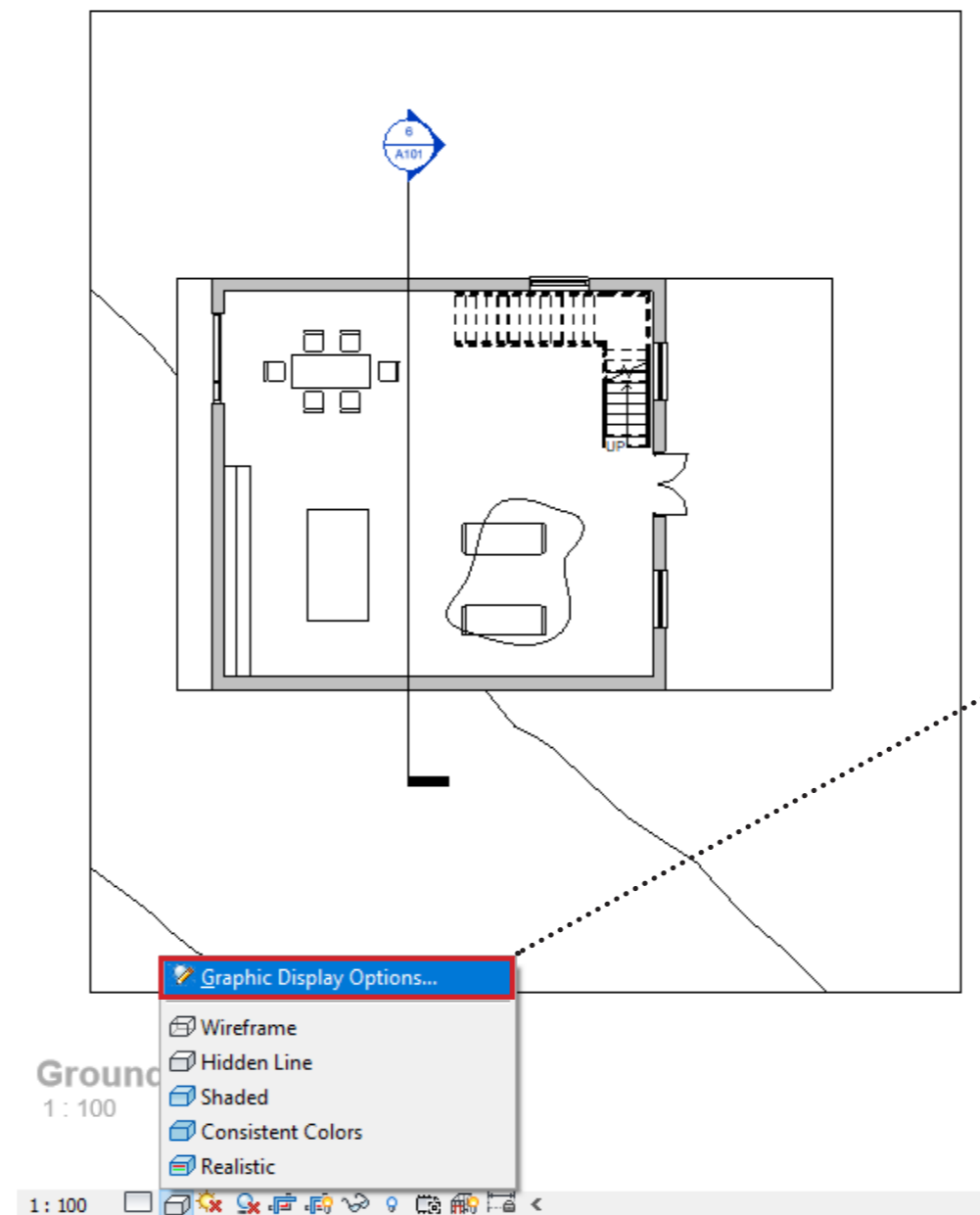
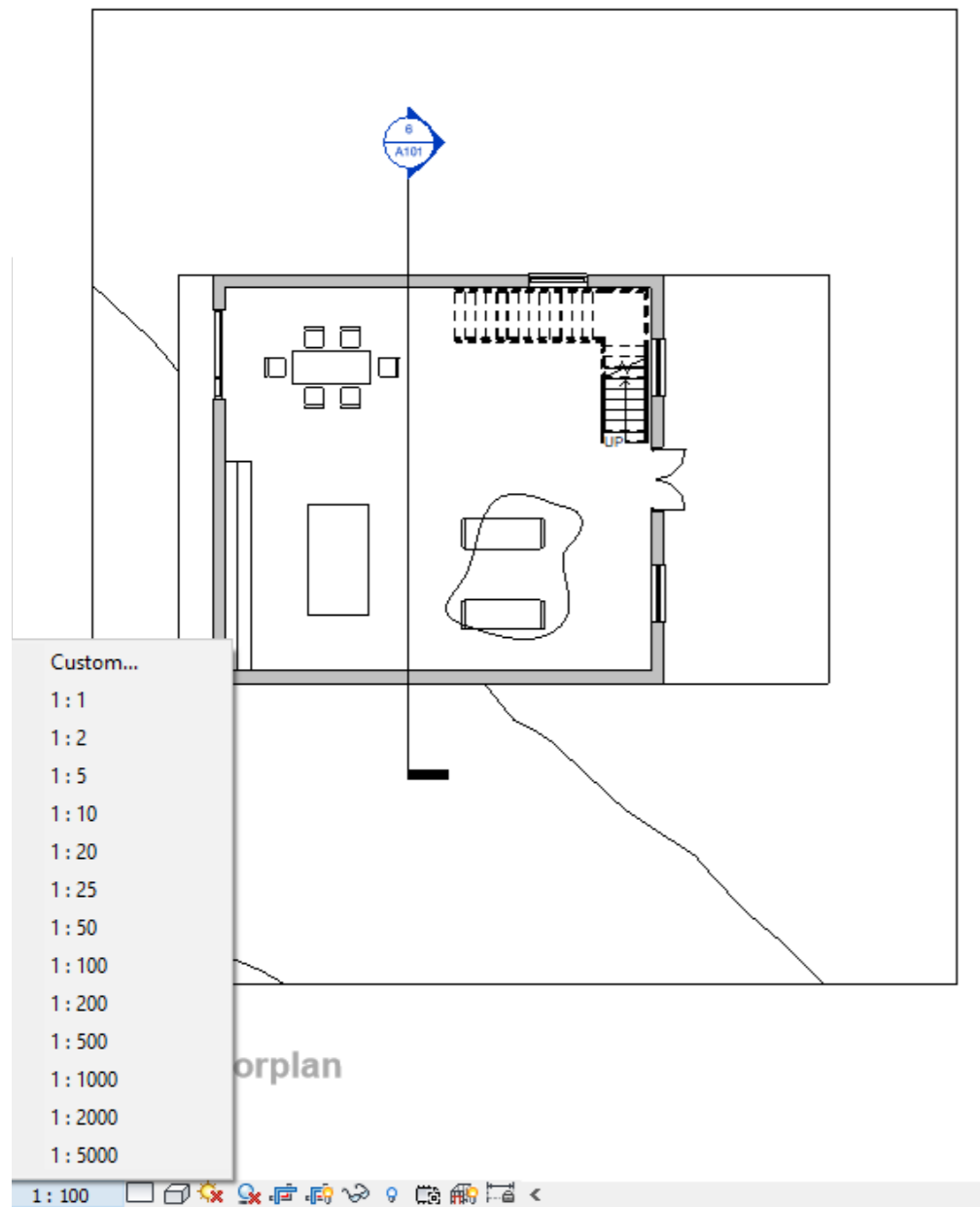
1. Double click view to edit the view port
2. Drag the dots to edit the size

Scale & Graphic Display

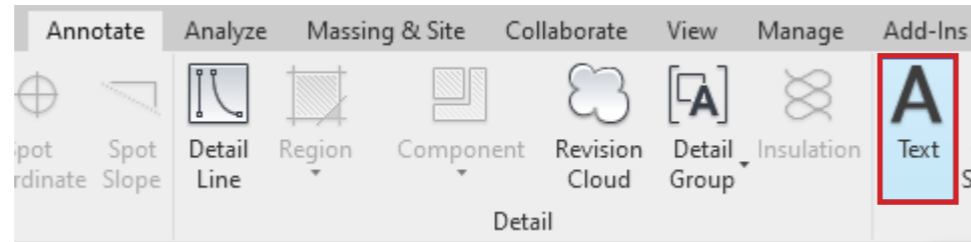
Setting up Sheet

Make sure your presentation is set at the right scale for your presentation.

Play around with graphic set ups.



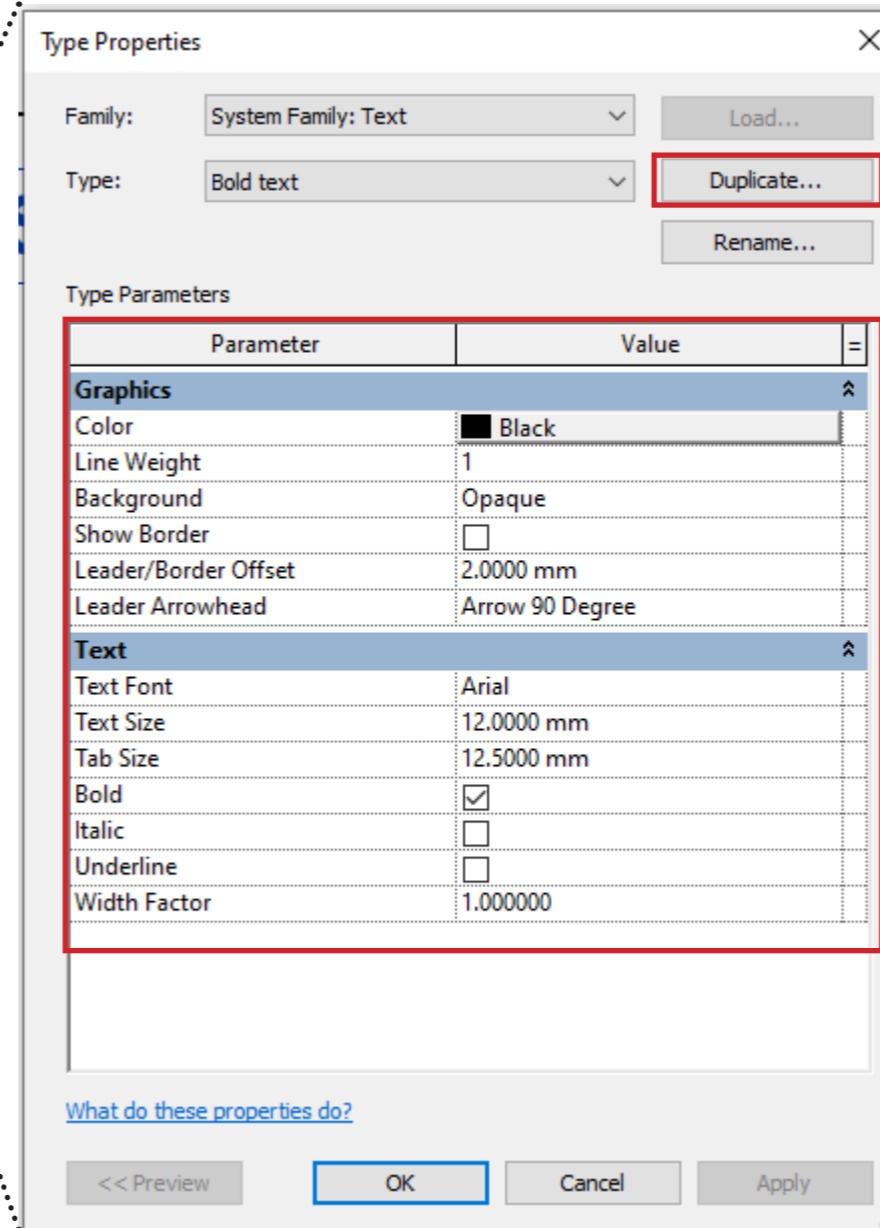
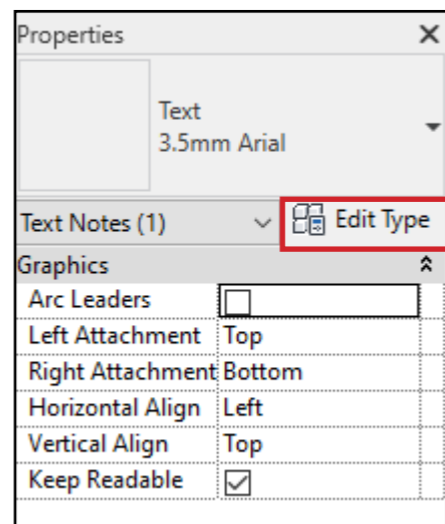
Text



Find text under Annotate



Draw and type into a new text box

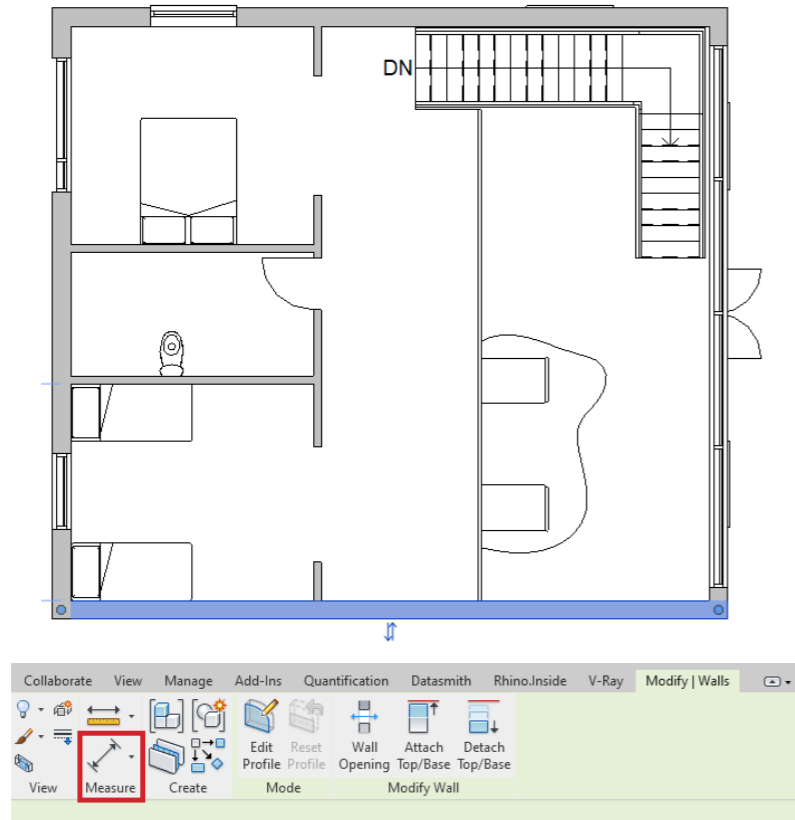


Make new custom text type
Edit Type > Duplicate

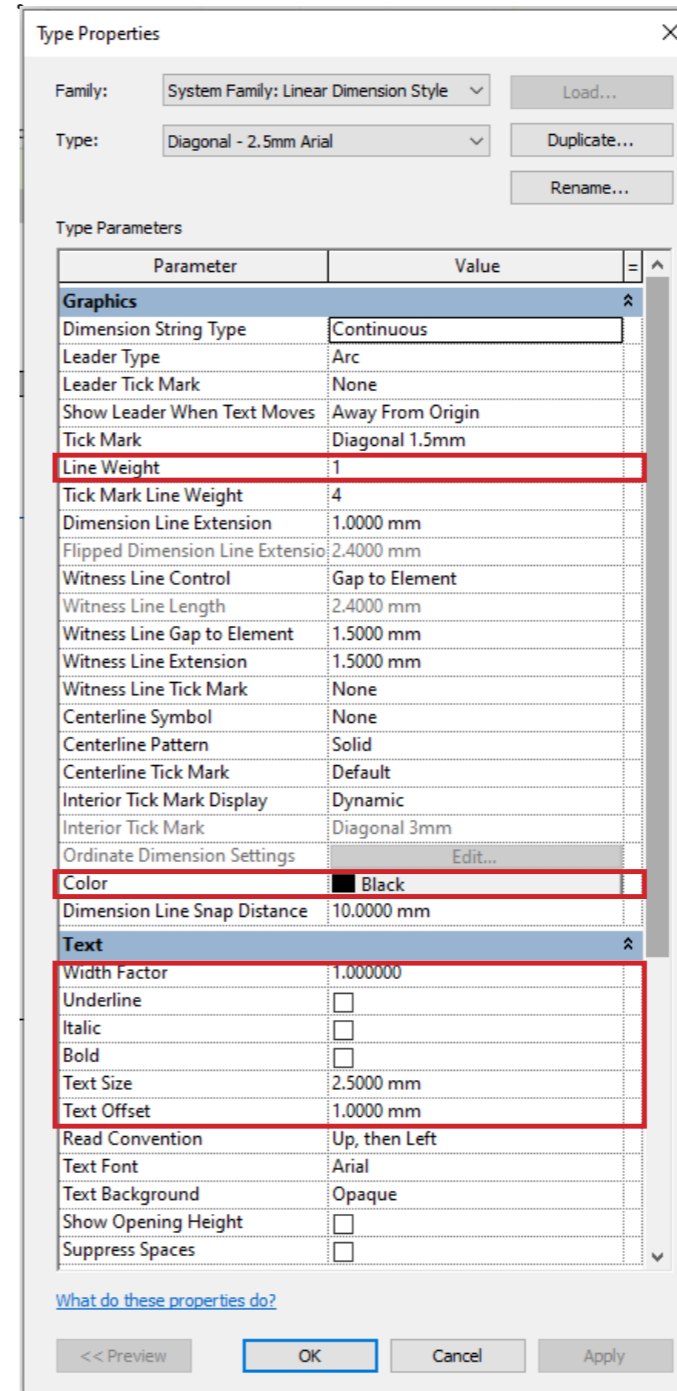
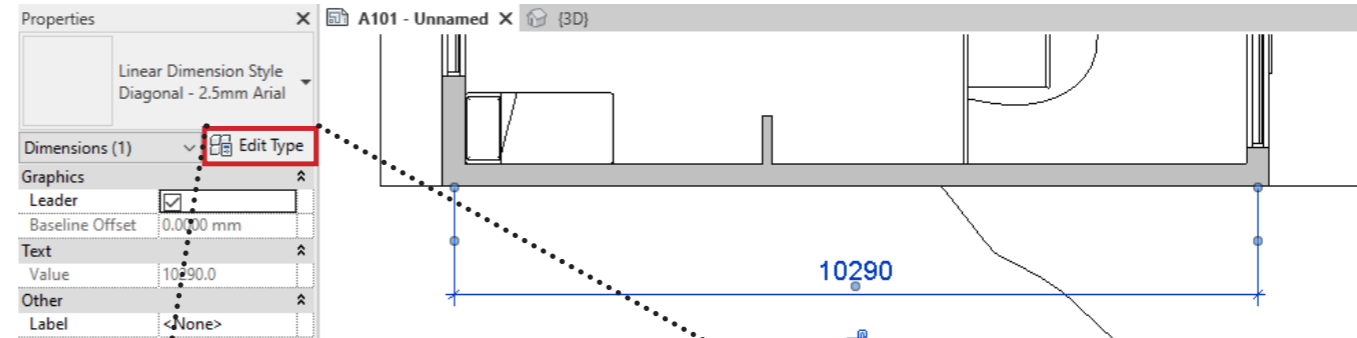
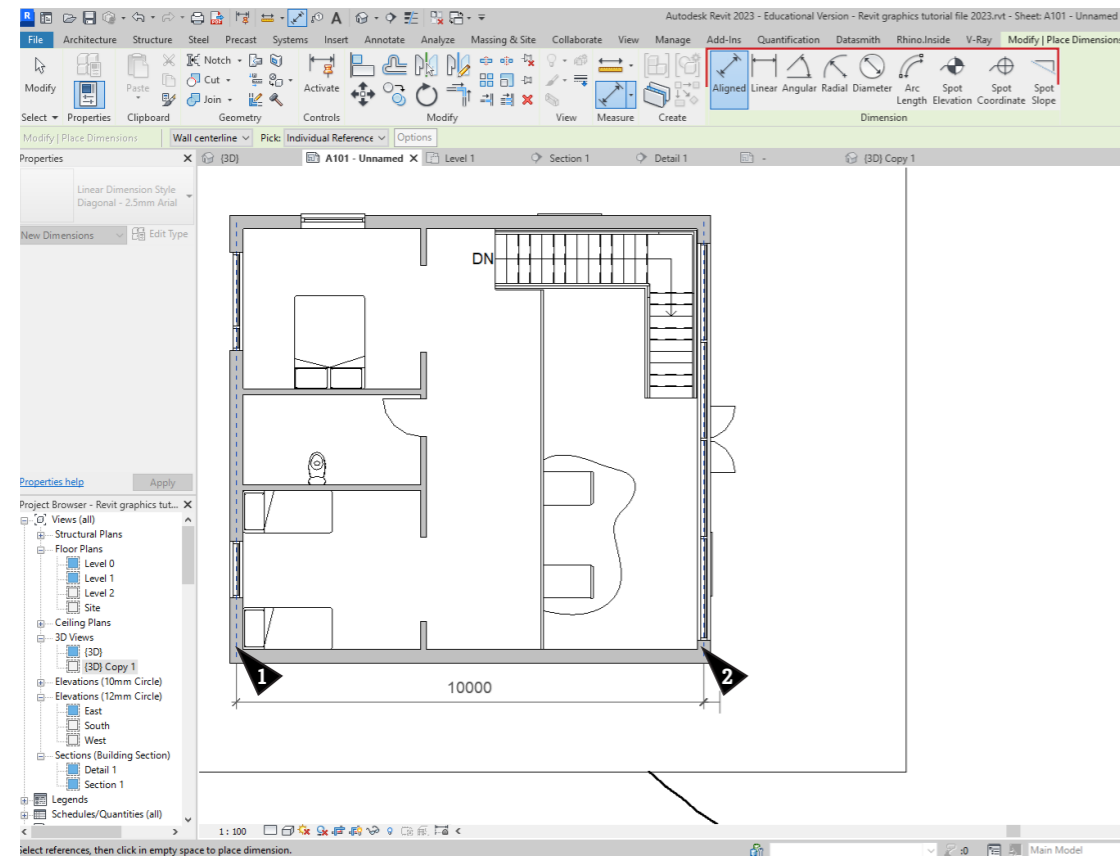
Here are your essential editing parameters
Change the colour, font, size, style, etc

Dimensioning

Select an element



>Select measuring tool

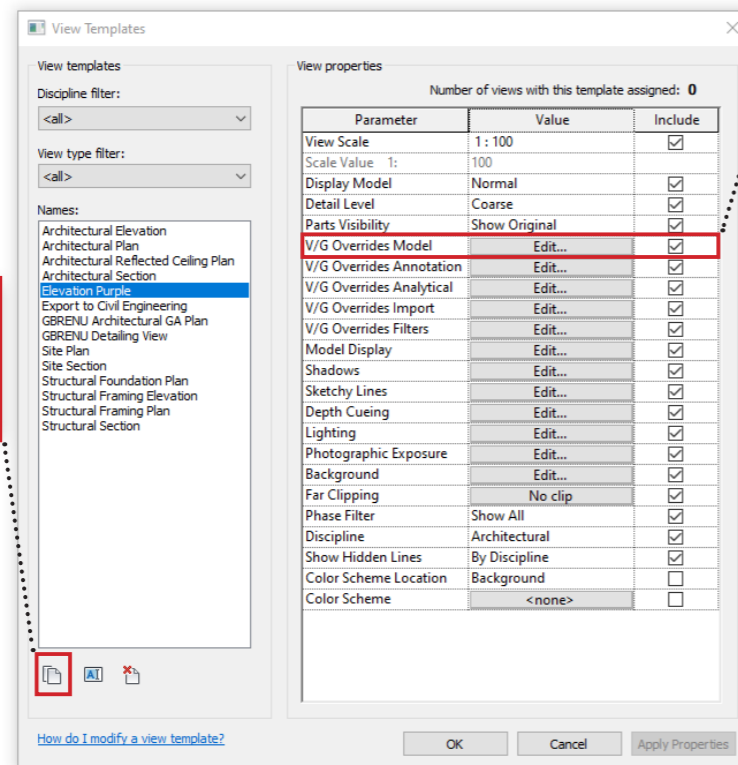
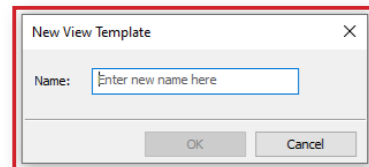
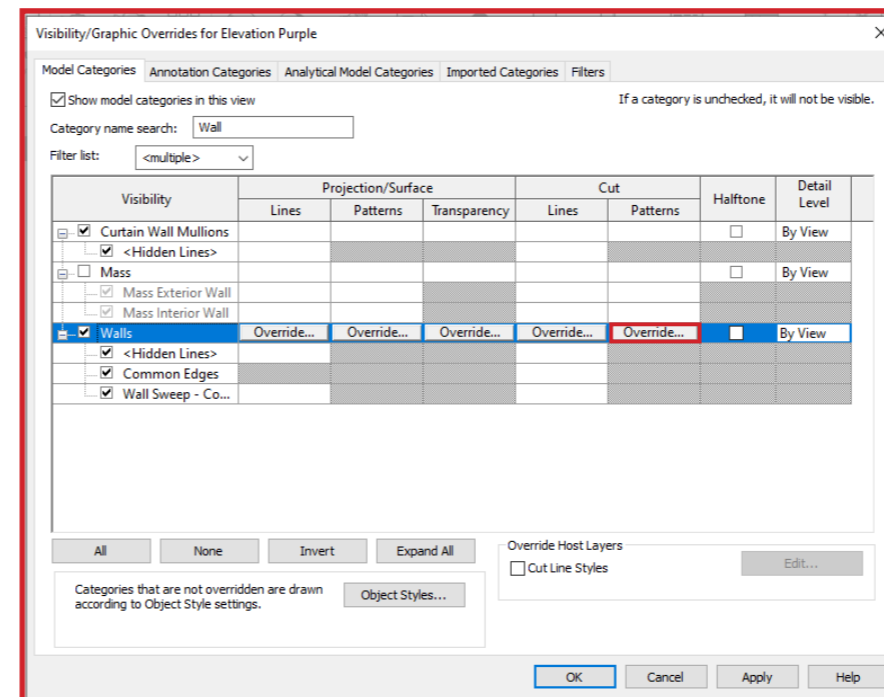
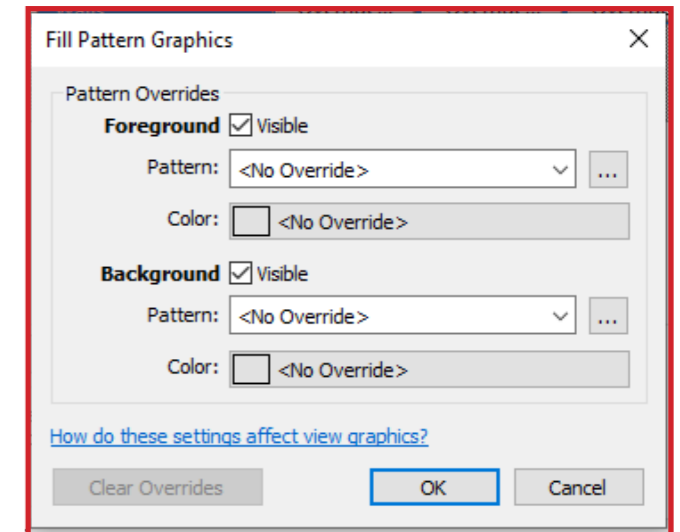
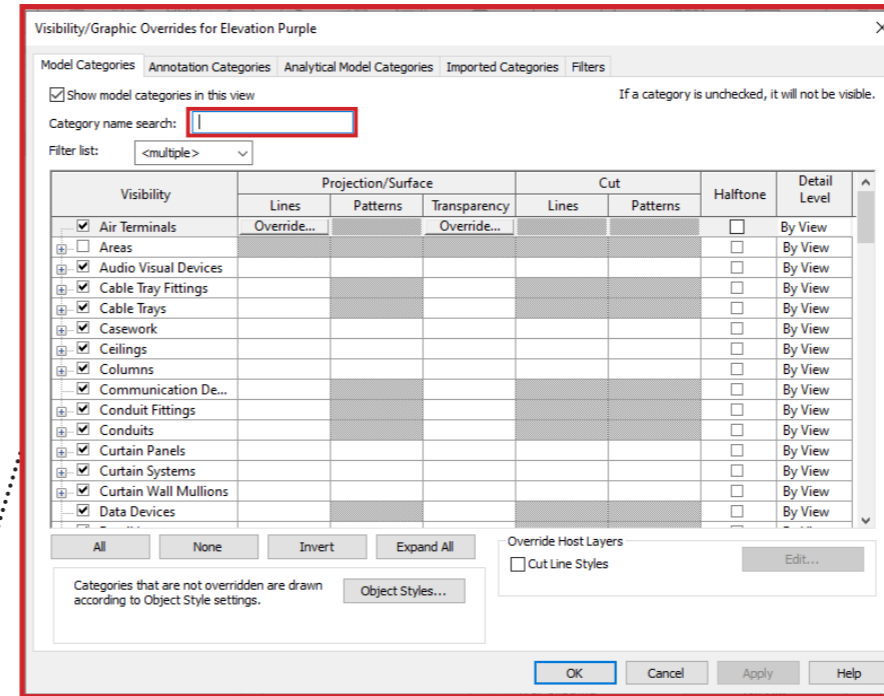
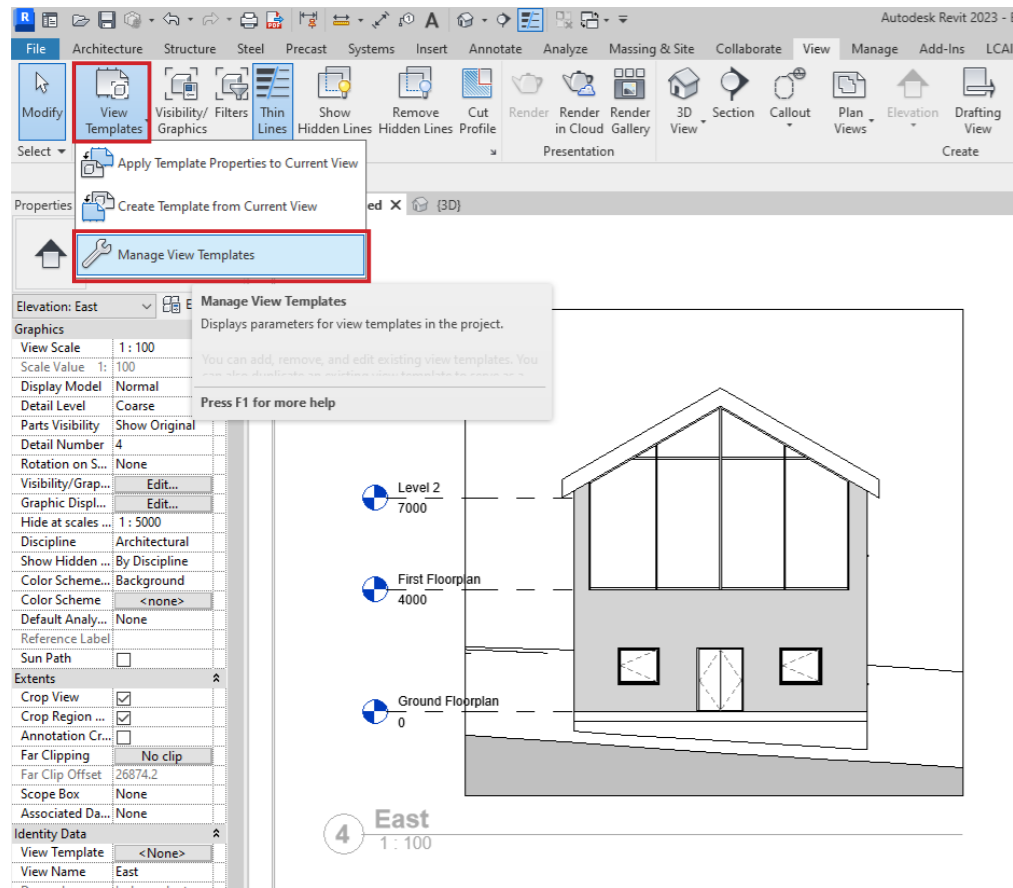


>Select to edit type

>Here are all the essentials to help customize your dimensions

Graphic Override

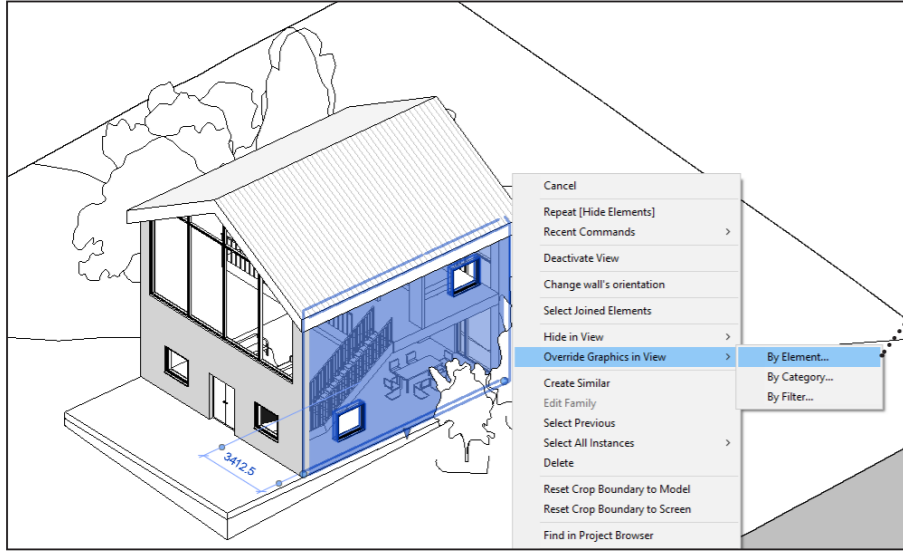
Via View Templates



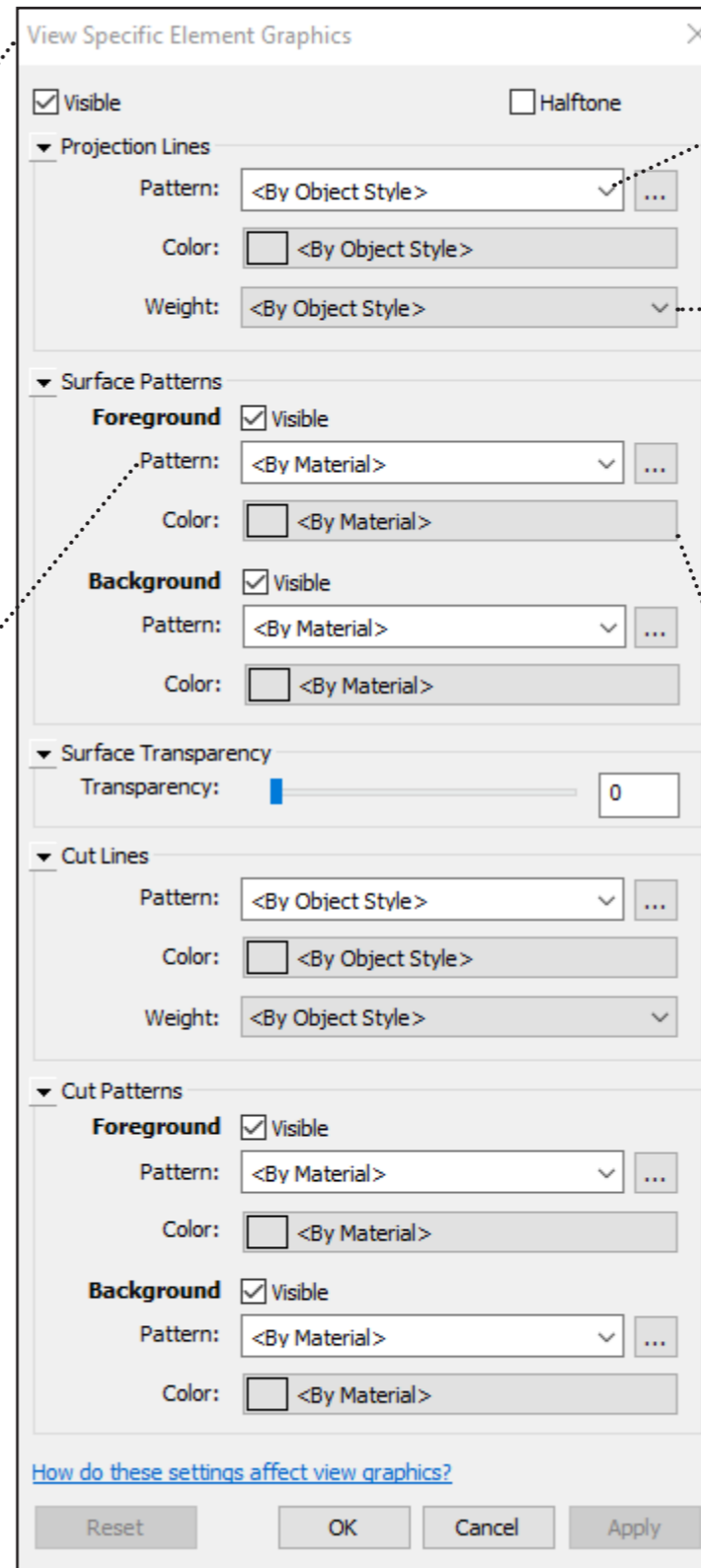
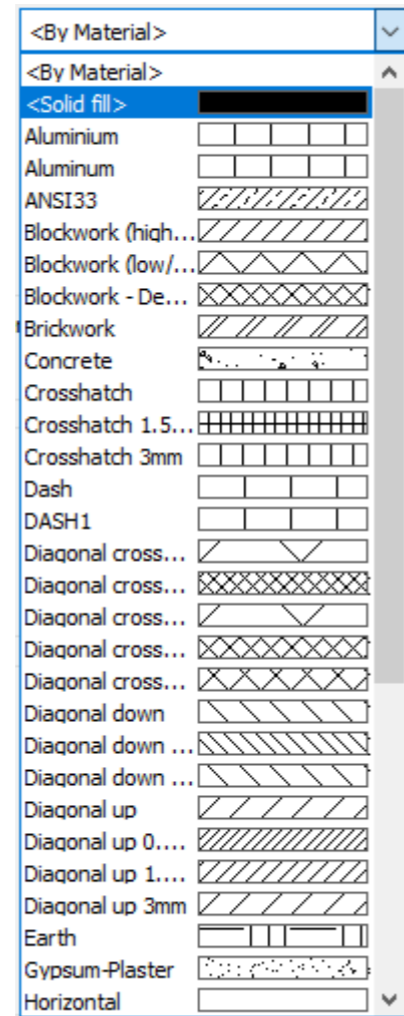
Graphic Override

Quick fix

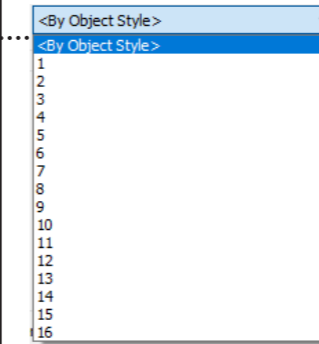
Right clicking elements > Override Graphics in View
> by Element or Category(eg. all walls)



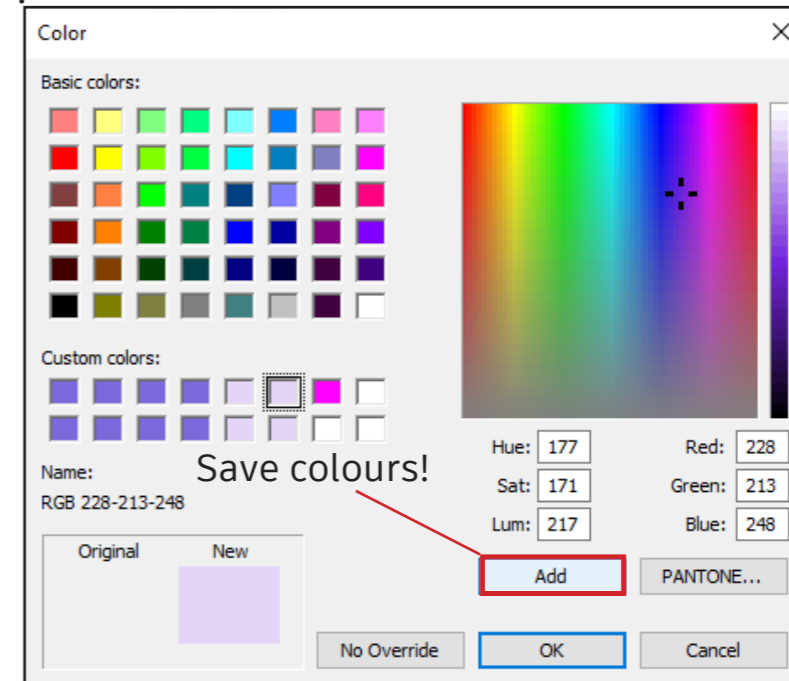
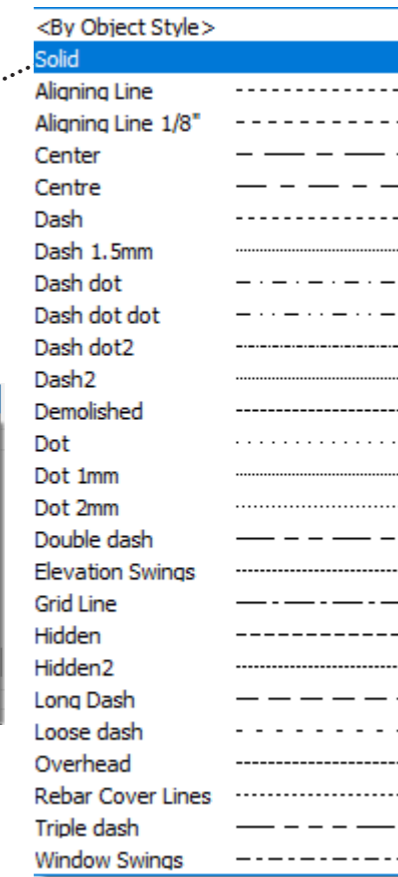
Patterns



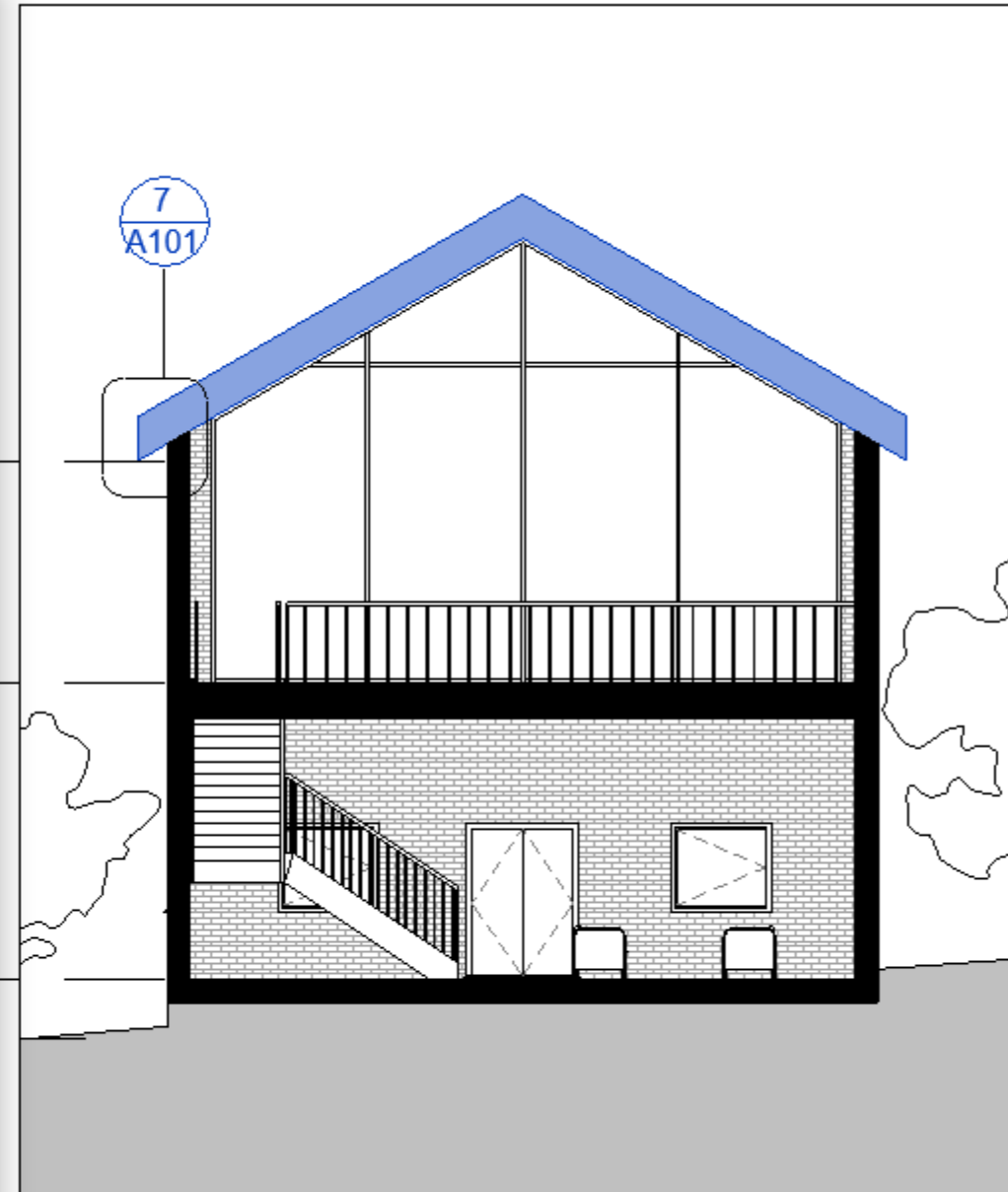
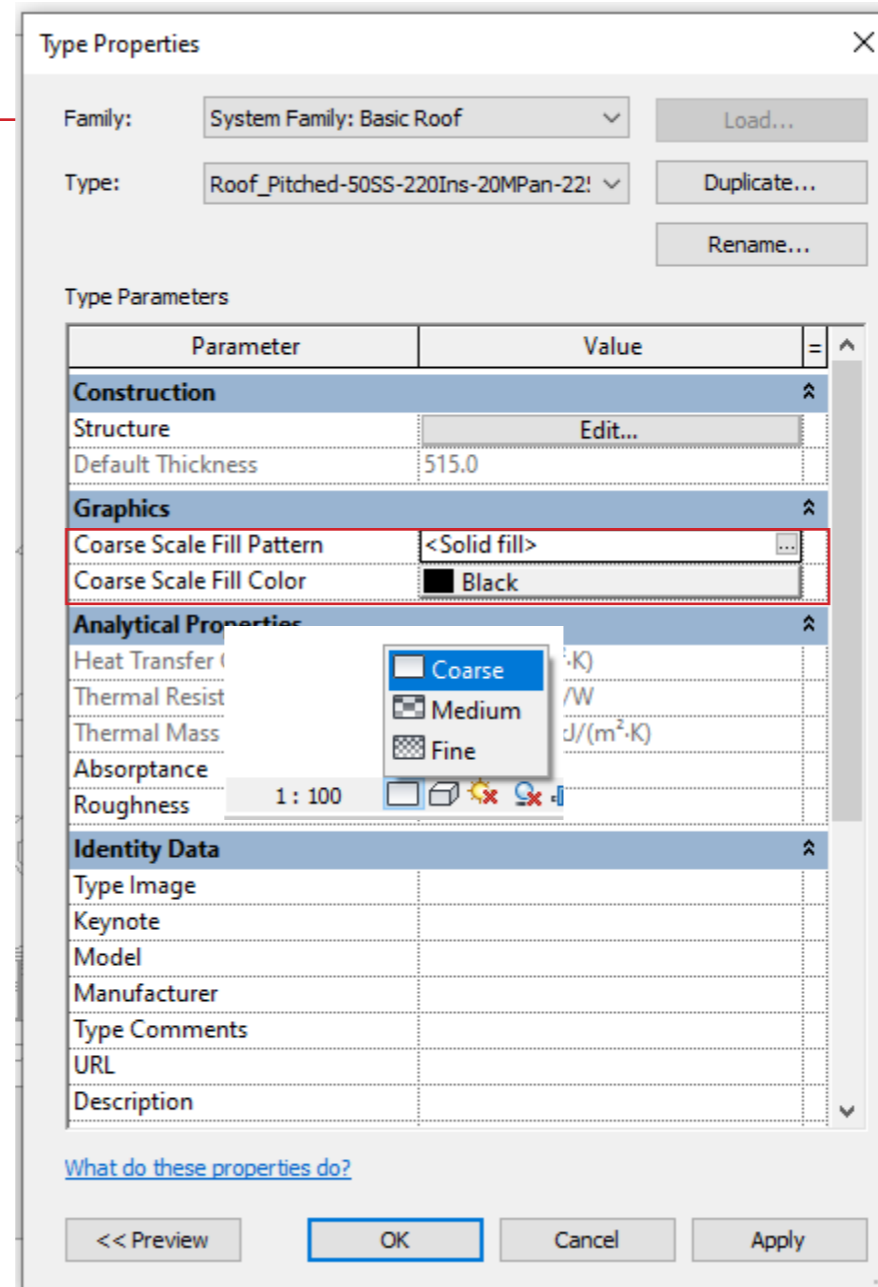
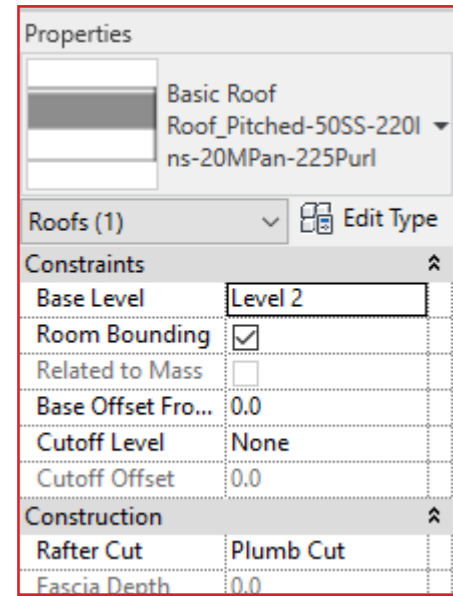
Line Weights



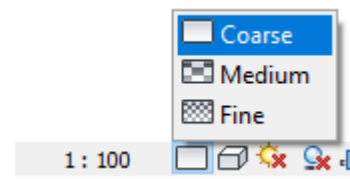
Line styles



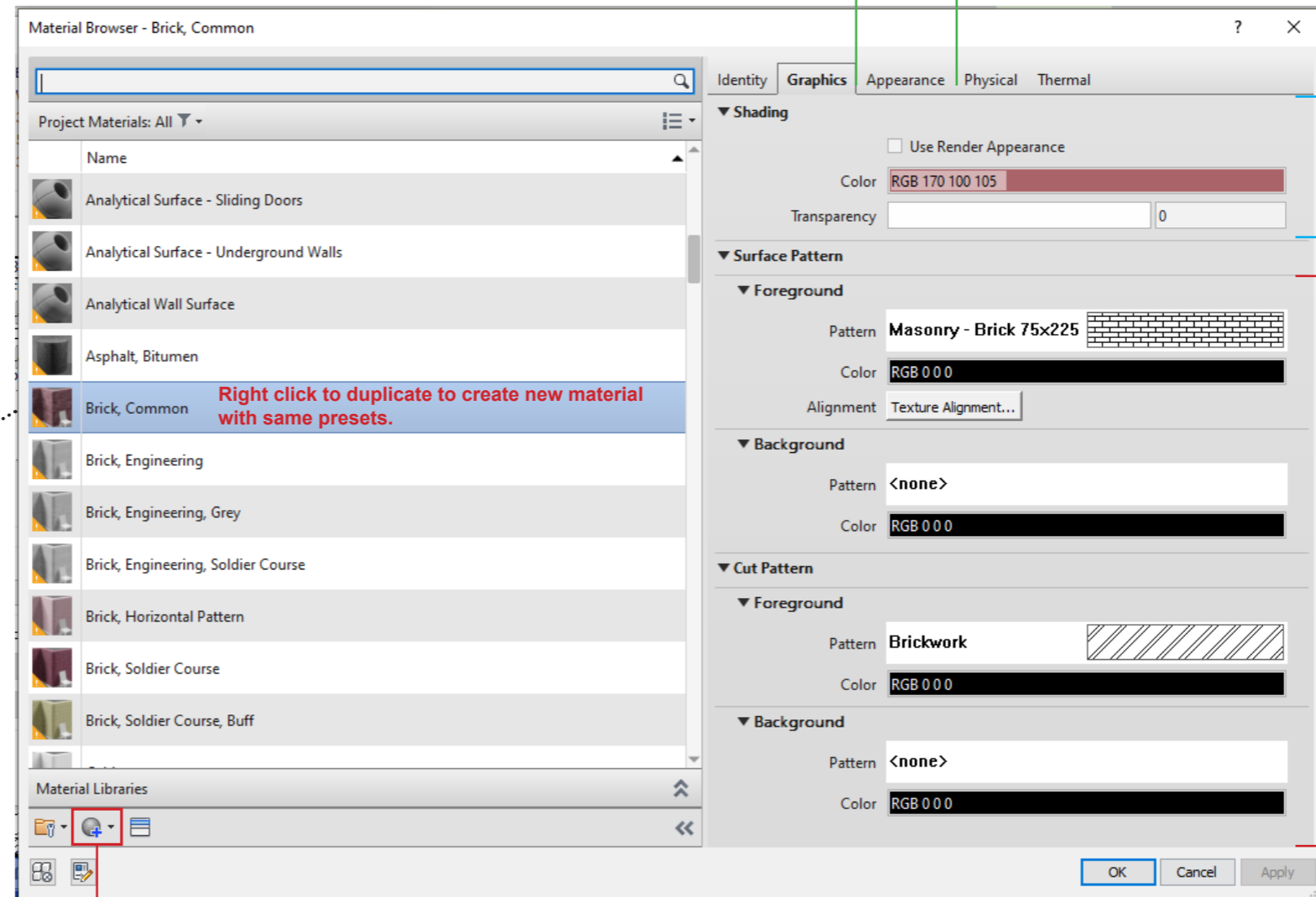
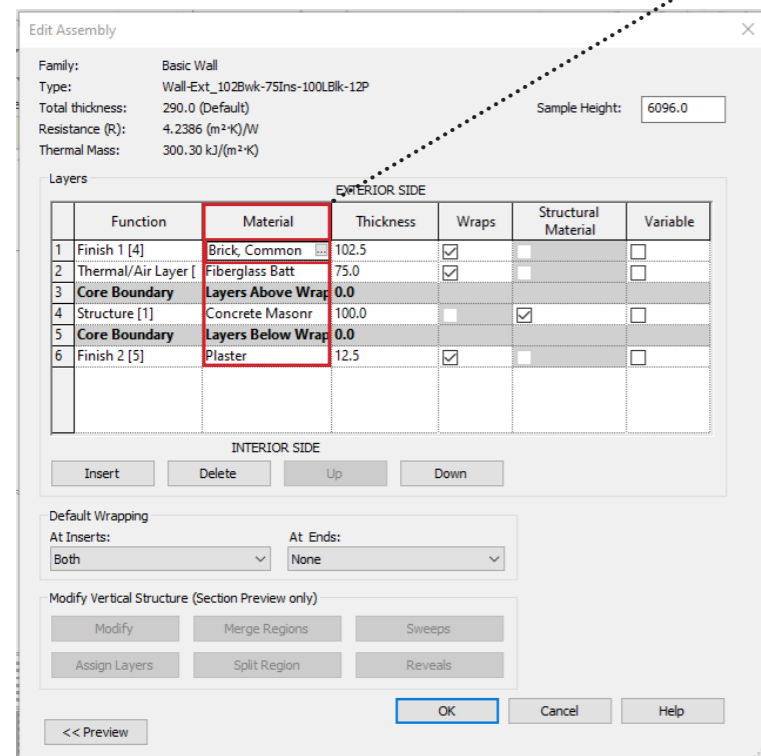
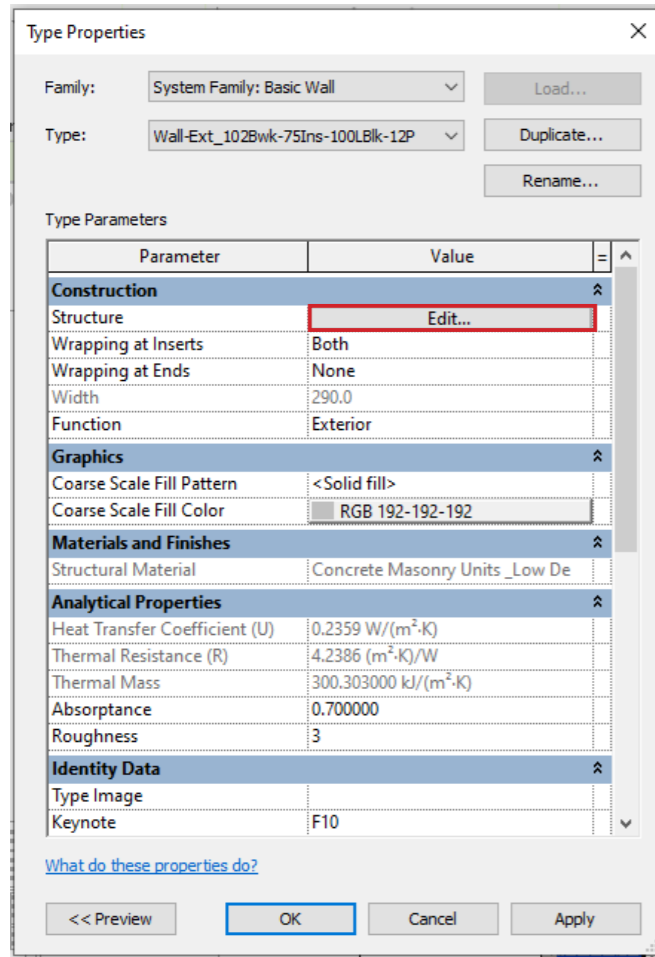
Coarse view simplified



When your view is set in Coarse the element graphic is simplified. You can easily edit the cut lines to a solid fill.



Material editing

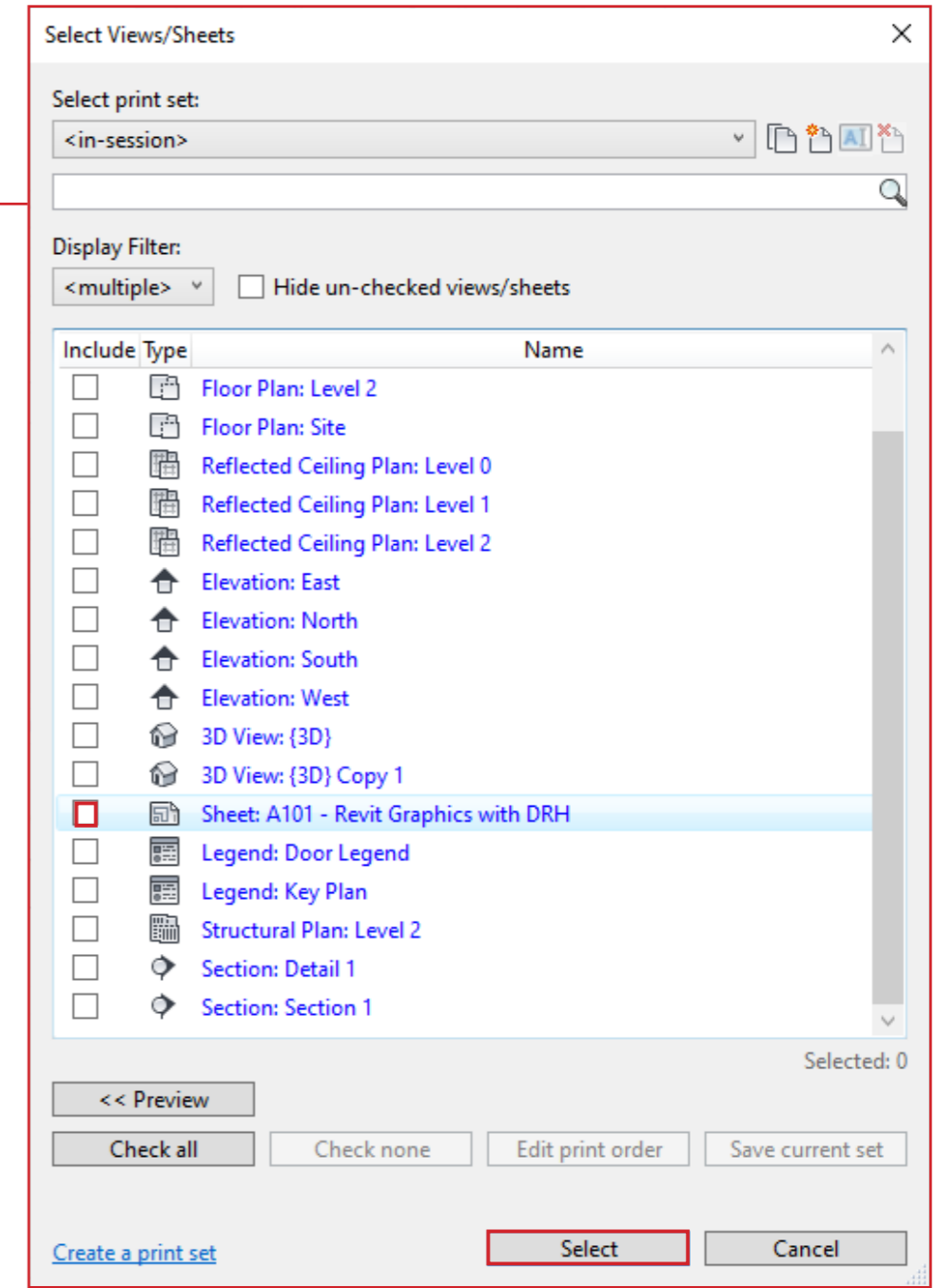
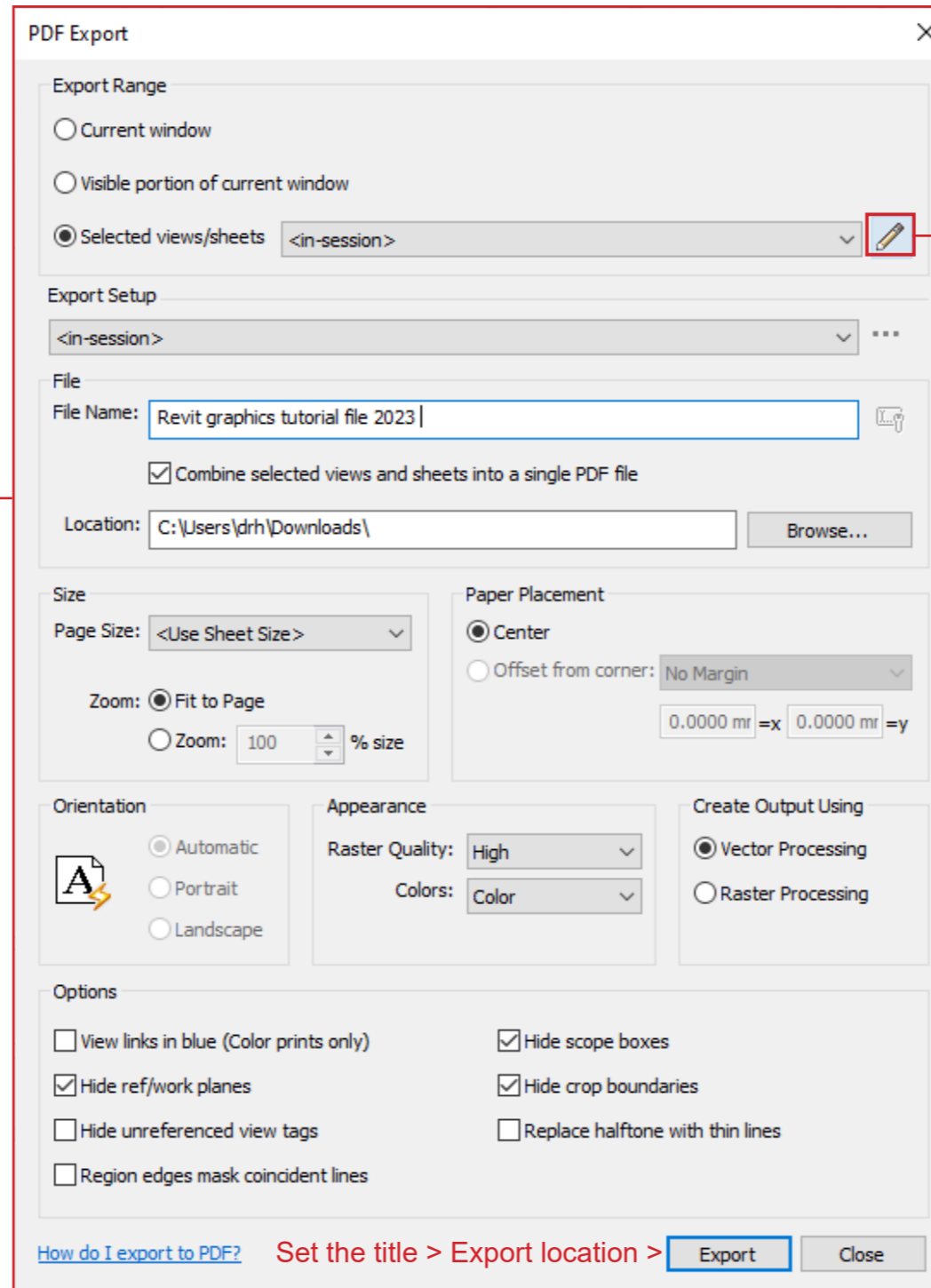
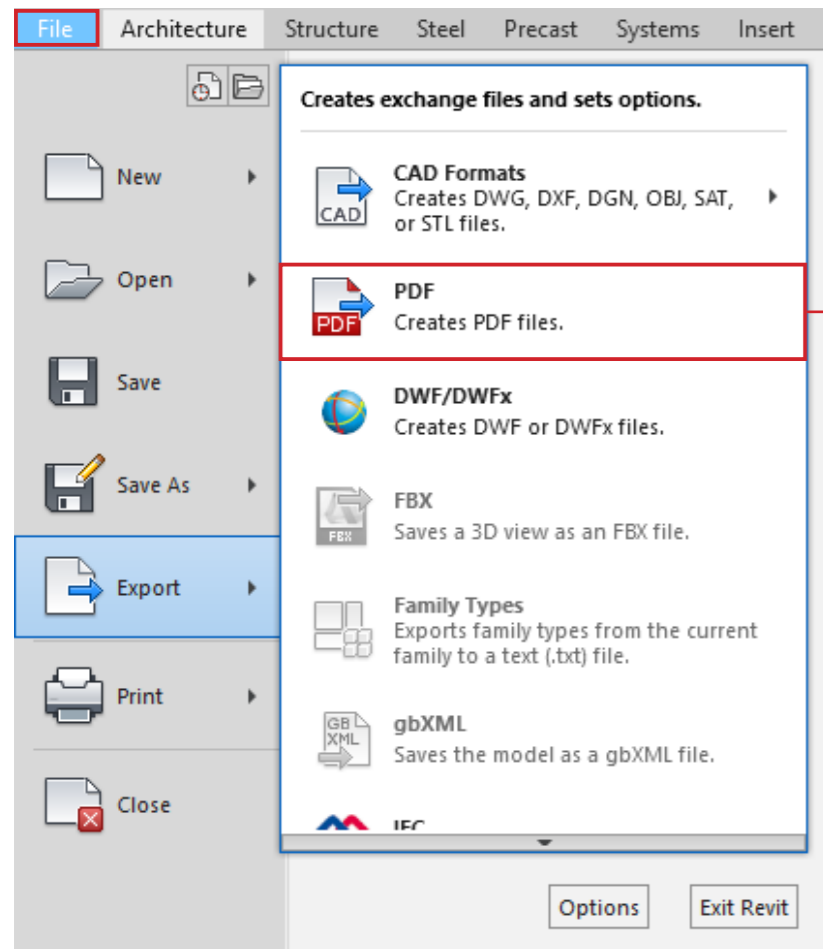


Visible in Rendered

Not visible in Hidden Lines

Visible in Hidden Line Consistent colours

Export



[How do I export to PDF?](#) Set the title > Export location > **Export** Close