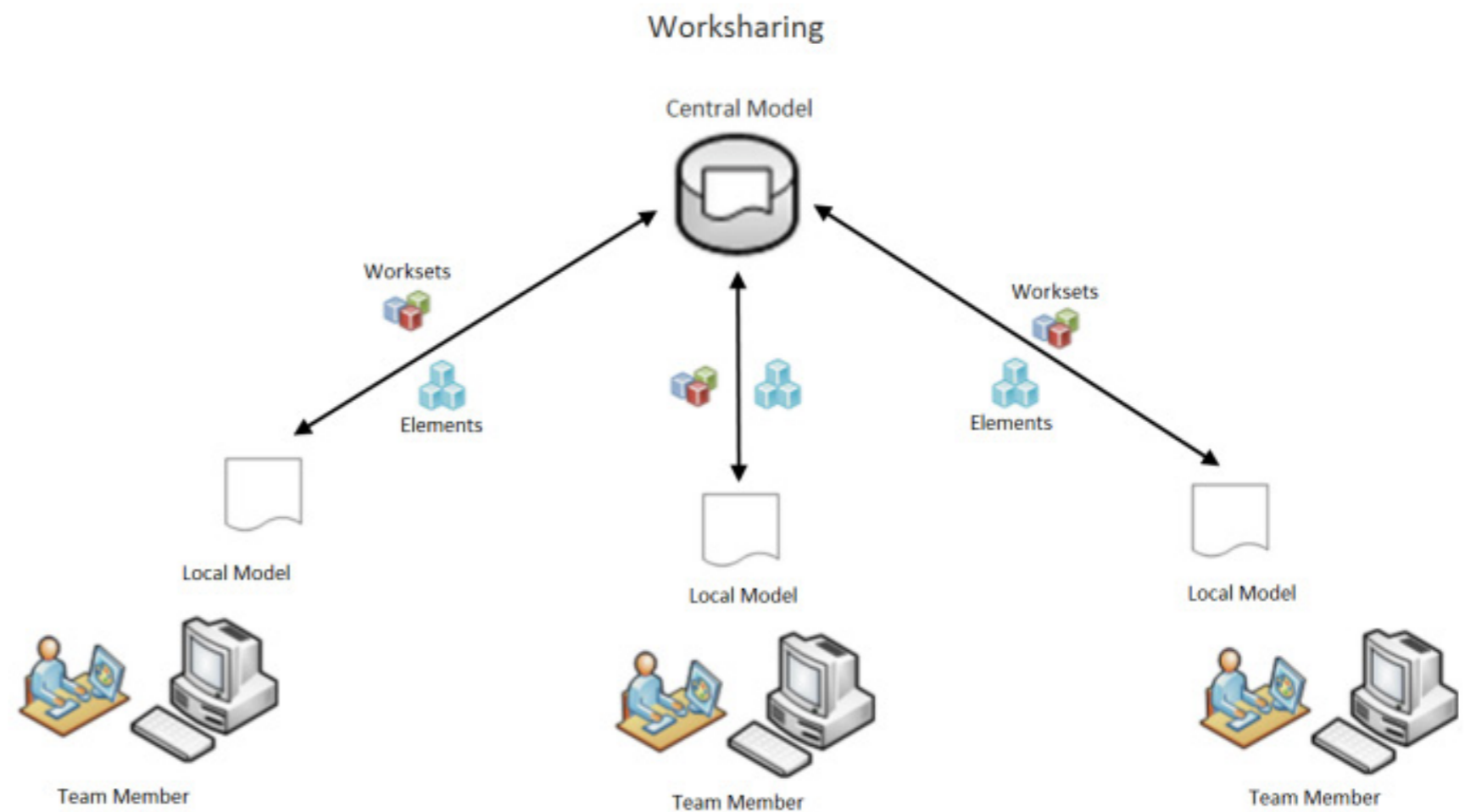
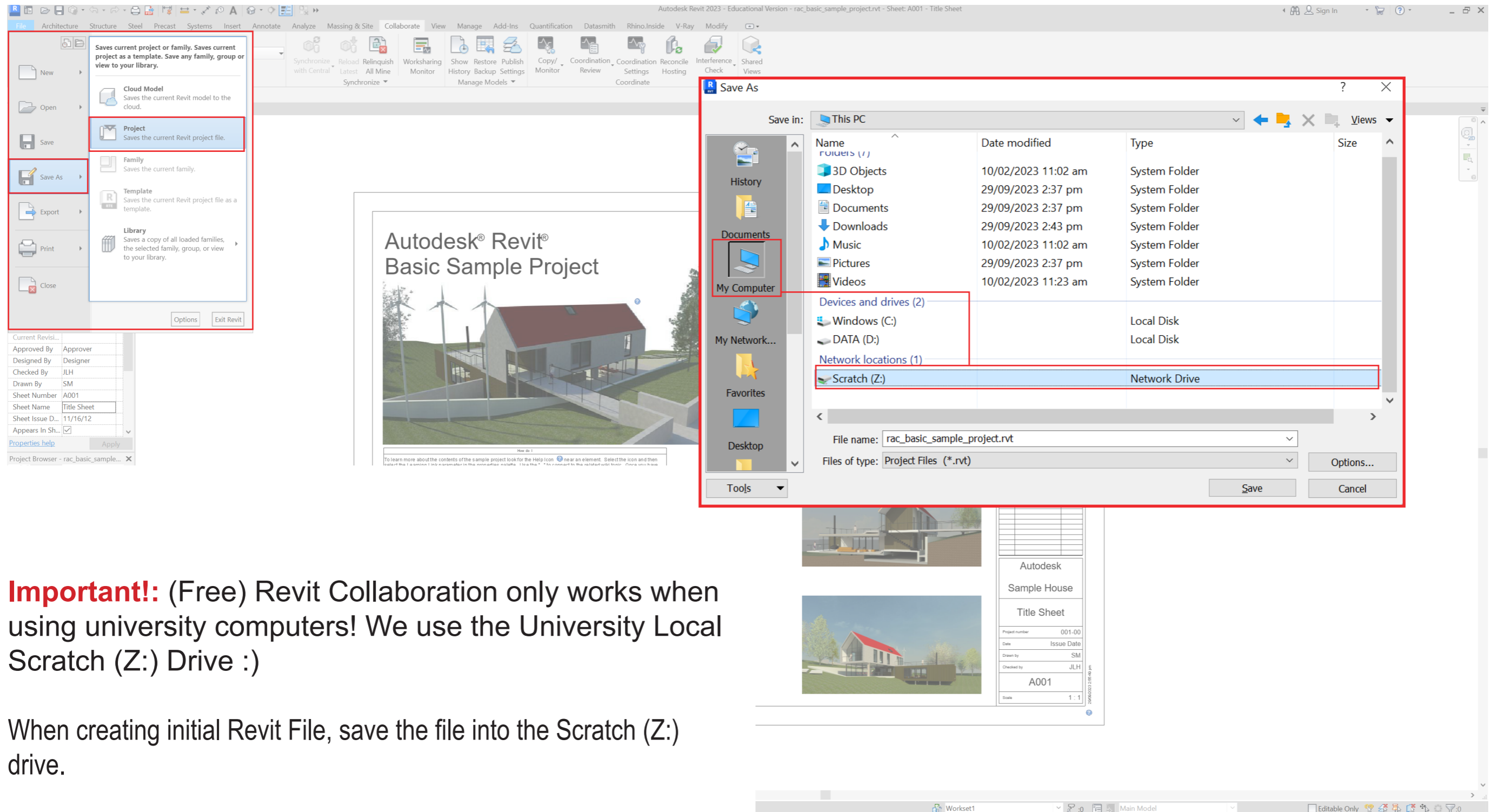


Revit Worksharing



Collaborate

Saving Initial Project File



Important!: (Free) Revit Collaboration only works when using university computers! We use the University Local Scratch (Z:) Drive :)

When creating initial Revit File, save the file into the Scratch (Z:) drive.

File → Save As → Project → My Computer → Scratch (Z:) → New Folder (Alt 5) → (Name Folder) → (File Name) → Save

Collaborate

Saving Project File

Under Tabs → Collaborate → Click Collaborate → Within your network → OK → Save(Ctrl S) → Yes to 'Save File as Central Model' → Your project is now Collaborative!

The screenshot shows the Autodesk Revit 2023 interface with the 'Collaborate' tab selected in the ribbon. The 'Collaborate' dialog box is open, displaying the following text:

You are enabling collaboration. This will allow multiple people to work on the same Revit model simultaneously.

How would you like to collaborate?

- Within your network**
Collaborate on a local or wide area network (LAN or WAN). The model will be converted to a workshared central model.
- In the cloud**
Collaborate with controlled permissions among project members. The model will be cloud workshared in the project you select.

[Which collaboration method should I choose?](#)

OK Cancel

The 'Save File as Central Model' dialog box is also open, displaying the following text:

This is the first time that the project has been saved since Worksharing was enabled. This project will therefore become the central model. Do you want to save this project as the central model?

If you want to save the file as the central model with a different name and/or different file location, click No and use the Save As command.

Yes No

Important!: Every semester, Scratch drive gets cleared. Remember to save onto another cloud/ your own storage!!!

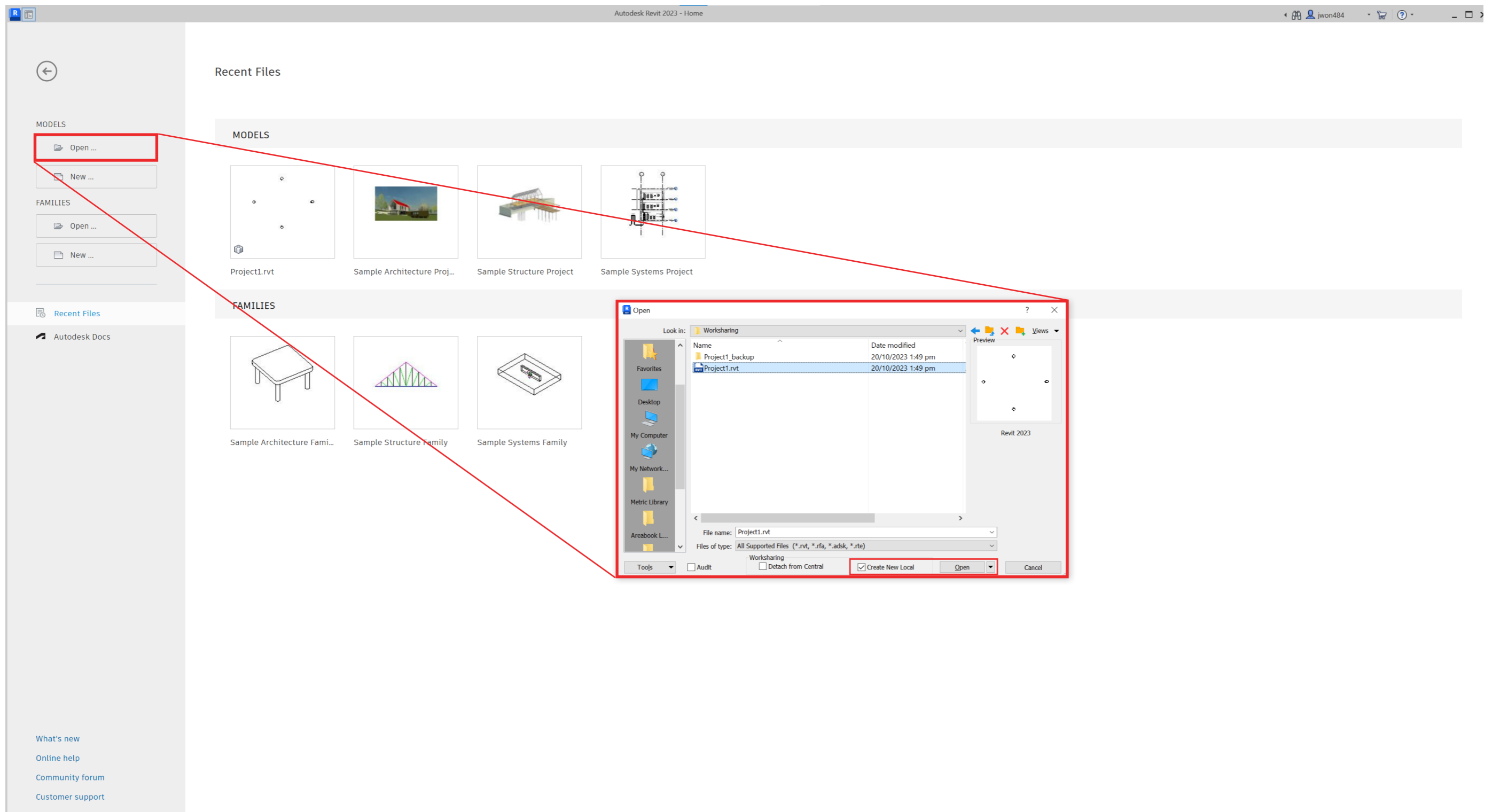
Collaborate

Opening File

On any of the studio computers, you will be able to find your file saved on the Scratch (Z:) drive.

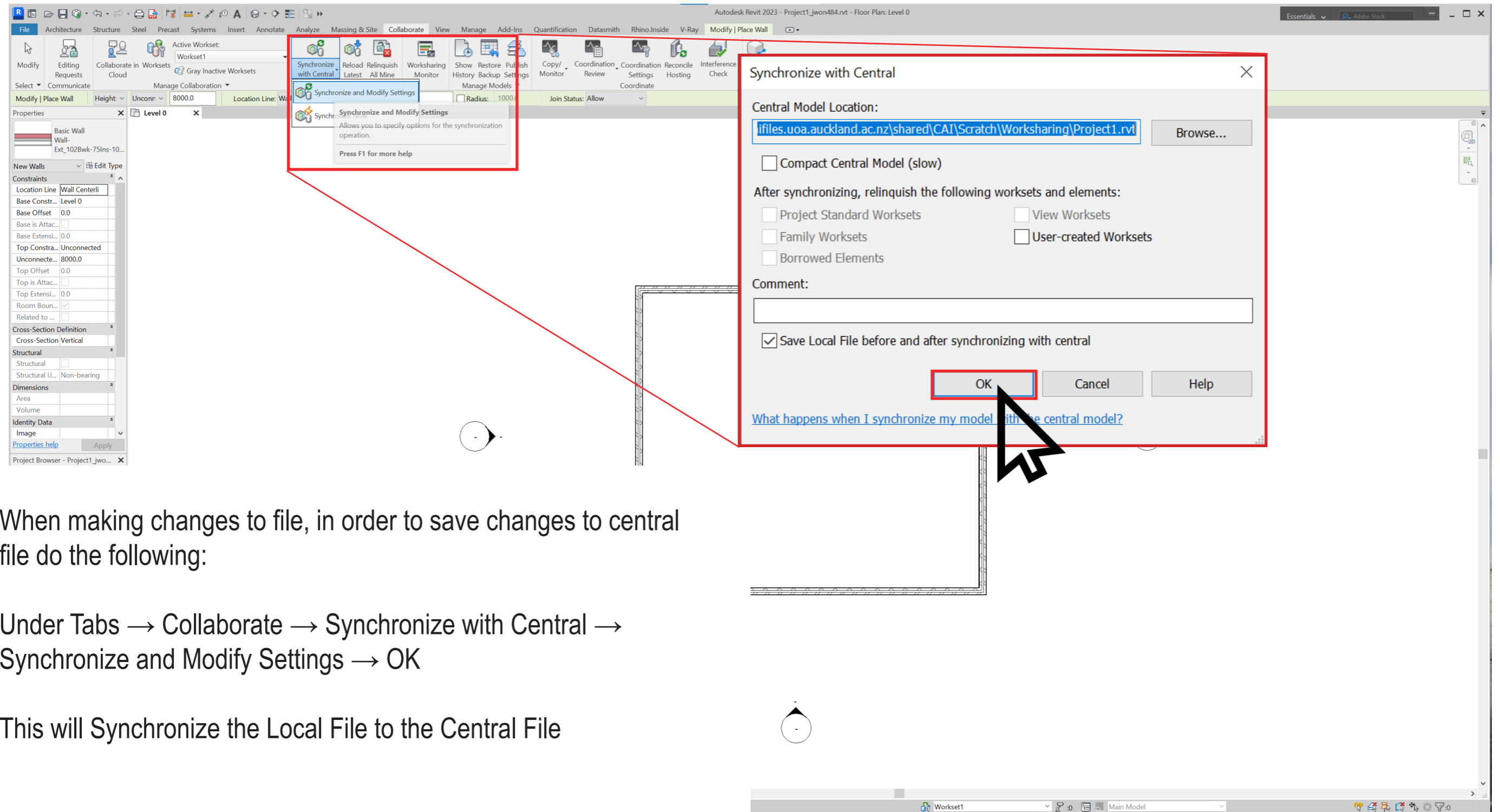
When Opening Project follow:

Open Revit → Open (MODELS...) → Locate file in Scratch (Z:) drive → 'Create New Local' checked → Open → This will create new Local File



Collaborate

Synchronising Changes from Local to Central File



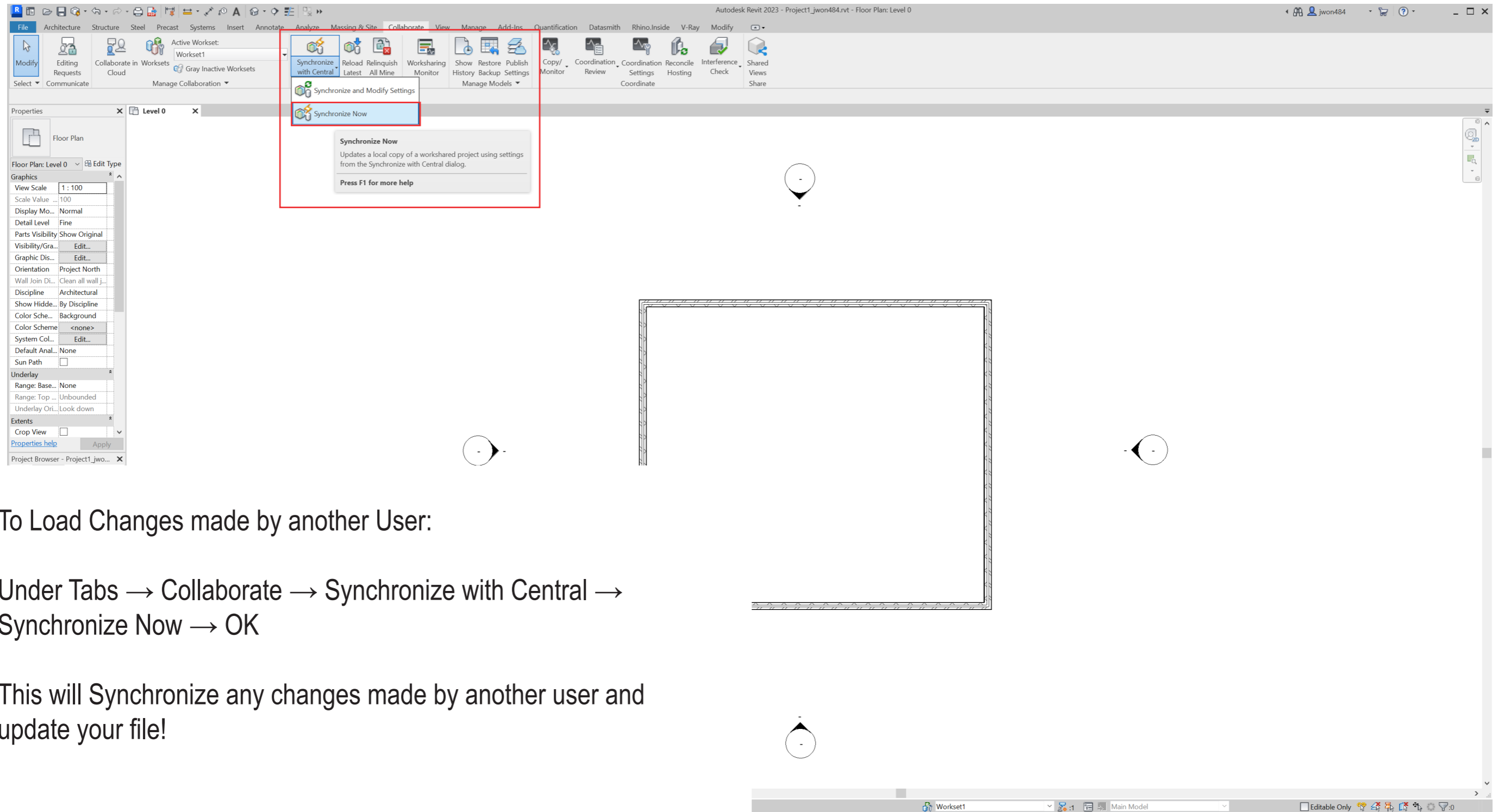
When making changes to file, in order to save changes to central file do the following:

Under Tabs → Collaborate → Synchronize with Central → Synchronize and Modify Settings → OK

This will Synchronize the Local File to the Central File

Collaborate

Synchronising Changes from Local to Central File



To Load Changes made by another User:

Under Tabs → Collaborate → Synchronize with Central → Synchronize Now → OK

This will Synchronize any changes made by another user and update your file!

Collaborate

Editable Elements

To make sure your teammates can edit the file → Under Tabs → Collaborate → Worksets → Under Editable → Yes to All → OK

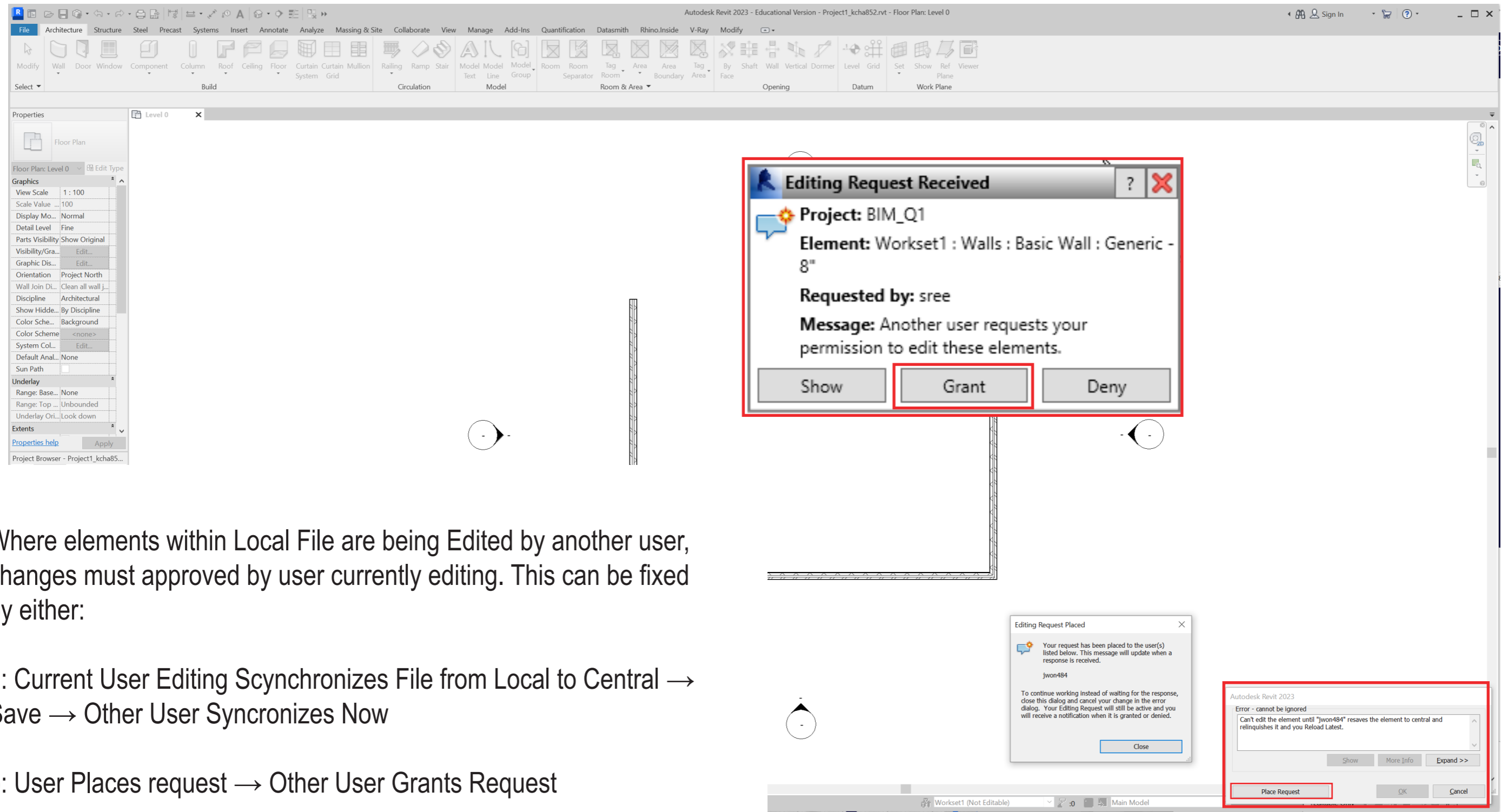
The screenshot shows the Autodesk Revit 2023 interface with the 'Collaborate' tab selected. The 'Worksets' panel is open, displaying a table of worksets. The 'Editable' column is highlighted with a red box. The 'OK' button is also highlighted with a red box. The 'Active workset' is set to 'Workset1'. The 'Gray Inactive Workset Graphics' checkbox is unchecked. The 'Show' section has 'User-Created' checked and 'Project Standards', 'Families', and 'Views' unchecked.

Name	Editable	Owner	Borrowers	Opened	Visible in all views
Shared Levels and Grids	Yes	jwon484		Yes	<input checked="" type="checkbox"/>
Workset1	Yes	jwon484		Yes	<input checked="" type="checkbox"/>

Buttons: New, Delete, Rename, Open, Close, Editable, Non Editable, OK, Cancel, Help

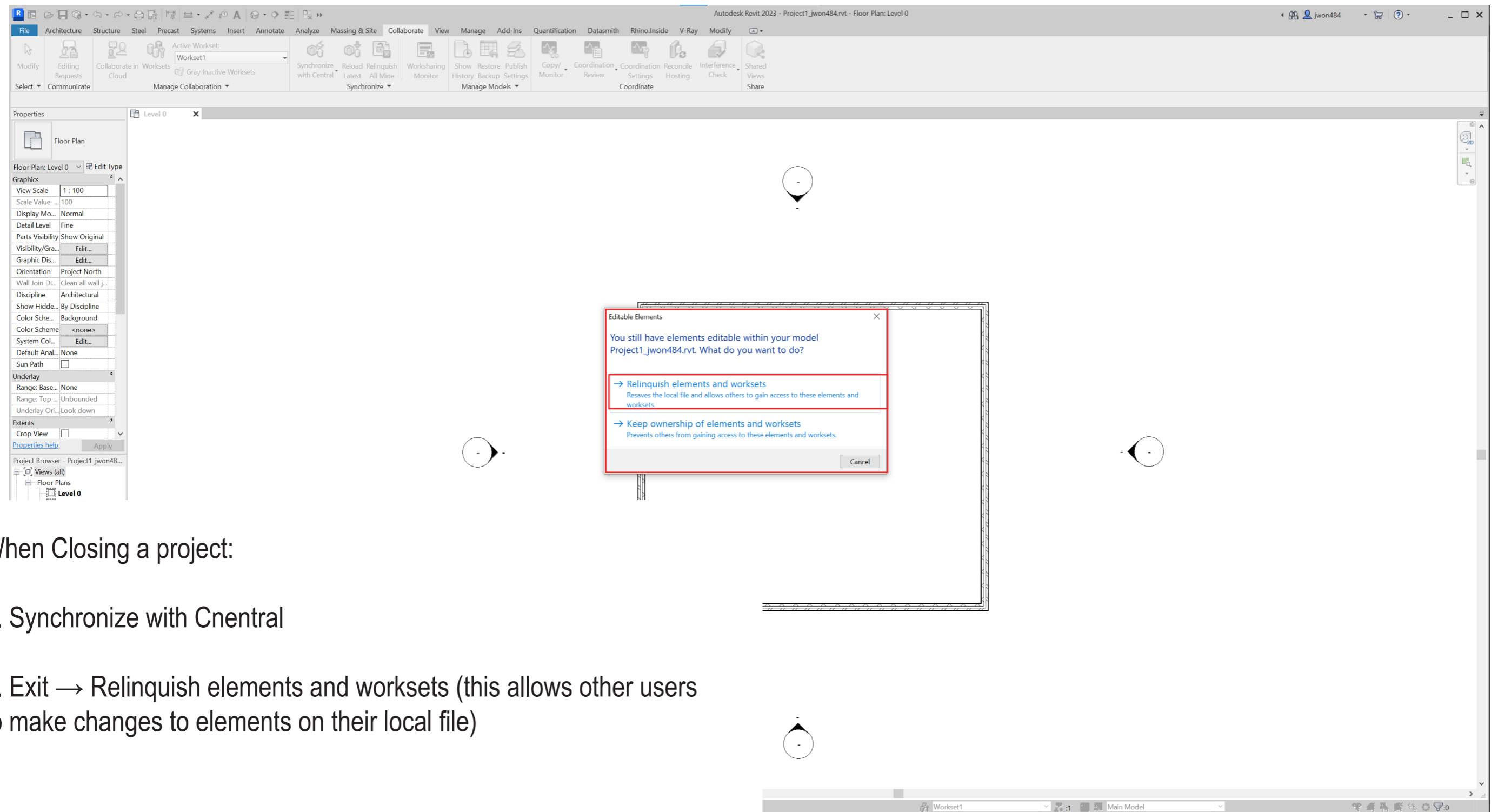
Collaborate

Editable Elements



Collaborate

Closing Project



When Closing a project:

1. Synchronize with Cnentral
2. Exit → Relinquish elements and worksets (this allows other users to make changes to elements on their local file)